

RESEARCH

Open Access



Evaluation of oral brush liquid-based cytology for oral squamous cell carcinoma: a comparative study of cytological and histological diagnoses at a single center

Katsutoshi Kokubun^{1*}, Kei Nakajima¹, Kei Yamamoto¹, Yoshihiko Akashi¹ and Kenichi Matsuzaka¹

Abstract

Purpose Liquid-based cytology is highly useful in oral cytology. However, there are only few reports on the accuracy of this method. The current study aimed to compare oral liquid-based cytological and histological diagnoses and to evaluate items that should be considered in oral cytological diagnosis for oral squamous cell carcinoma.

Methods We included 653 patients who underwent both oral cytological and histological examinations. Data on sex, specimen collection region, cytological and histological diagnoses, and histological images were reviewed.

Results The overall male-to-female ratio was 1:1.18. The tongue was the most common specimen collection region, followed by the gingiva and buccal mucosa. The most common cytological examination result was negative (66.8%), followed by doubtful (22.7%) and positive (10.3%). The sensitivity, specificity, positive predictive value, and negative predictive value of cytological diagnosis were 69%, 75%, 38%, and 92%, respectively. Approximately 8.3% of patients with a negative cytological diagnosis had a histological diagnosis of oral squamous cell carcinoma. Furthermore, 86.1% of histopathologic images of cytology-negative squamous cell carcinomas exhibited well-differentiated keratinocytes lacking atypia on the surface. The remaining patients developed recurrence, or they had low cell counts.

Conclusion Liquid-based cytology is useful in screening oral cancer. However, a cytological diagnosis of superficial-differentiated oral squamous cell carcinoma is occasionally inconsistent with the histological diagnosis. Therefore, histological and cytological examinations should be performed if tumor-like lesions are suspected clinically.

Keywords Cytology, Pathology, Liquid-based cytology, Diagnosis, Oral cancer

*Correspondence:

Katsutoshi Kokubun
kkokubun@tdc.ac.jp

¹Department of Pathology, Tokyo Dental College, 2-9-18 Kandamisaki-cho, Chiyoda-ku, Tokyo 101-0061, Japan



© The Author(s) 2023. **Open Access** This article is licensed under a Creative Commons Attribution 4.0 International License, which permits use, sharing, adaptation, distribution and reproduction in any medium or format, as long as you give appropriate credit to the original author(s) and the source, provide a link to the Creative Commons licence, and indicate if changes were made. The images or other third party material in this article are included in the article's Creative Commons licence, unless indicated otherwise in a credit line to the material. If material is not included in the article's Creative Commons licence and your intended use is not permitted by statutory regulation or exceeds the permitted use, you will need to obtain permission directly from the copyright holder. To view a copy of this licence, visit <http://creativecommons.org/licenses/by/4.0/>. The Creative Commons Public Domain Dedication waiver (<http://creativecommons.org/publicdomain/zero/1.0/>) applies to the data made available in this article, unless otherwise stated in a credit line to the data.

Introduction

Oral cancer is the 16th most common neoplasm worldwide, with an estimated 355,000 new diagnoses and >177,000 deaths in 2018 [1]. The most common sites of oral cancer are the tongue, gingiva, and floor of the mouth, accounting for more than half of all the cases. Oral cancer arises primarily from epithelial cells, and almost 90% of cases originate from squamous cell carcinoma (SCC) [2]. Surgical resection is usually the treatment of choice for oral cancer [2]. Overall survival rates vary by region, geography, and stage of the disease. In Japan, for example, approximately 60% patients survive 5 years after diagnosis [3]. Regarding postoperative satisfaction, appearance, swallowing dysfunction, dry mouth, and oral functional deficits are significantly better in patients with early-stage versus advanced-stage cancer [4]. Therefore, early diagnosis is important in preserving quality of life (QOL). However, mortality is still an issue.

Accurate and early diagnosis of oral cancer and mucosal diseases is essential for developing treatment strategies and improving patient prognoses [5]. Histological examination is widely used as a general definitive diagnostic method [6]. This method is as invasive as a blood test, which can be burdensome for patients. However, a histological examination is necessary for obtaining a definitive diagnosis. Oral cytology is less invasive and easier to perform than histological examination and can be a useful screening method for oral mucosal diseases [7].

Exfoliative cytology using an oral brush can help dentists and other physicians determine whether oral lesions are malignant or in an early, curable stage [8, 9]. Exfoliative cytology is a simple, safe, and reliable method of microscopically examining cells that have been shed or desquamated from the mucosa. Exfoliative cytology includes the conventional method and liquid-based cytology (LBC) [10]. The conventional method involves chair-side scraping of the oral mucosa and directly smearing it on a glass slide. This method requires proper technique because mishandling can alter the morphology of the collected cells. Conversely, in LBC, cells are spread in a fixative solution to create a thin layer of cells on the slide. Therefore, LBC, which is widely used, does not require complicated manipulations. In addition, the cell collection volume is larger and specimen artifacts produced by bleeding and saliva are reduced in LBC compared with the conventional method [7, 11]. However, fewer studies have focused on the accuracy of LBC than the number of studies focused on the conventional method [7]. Furthermore, the diagnostic accuracy of LBC over histological diagnosis has not been studied in detail. Therefore, the purpose of this study was to examine whether LBC is sufficient as a standard method for screening suspicious lesions in the oral cavity and to understand the

limitations of LBC. For this, we retrospectively compared LBC results with histological diagnoses.

Materials and methods

Patient characteristics

Patients with clearly visible oral lesions, which showed apparent variation from the normal healthy mucosa, presenting to the Tokyo Dental College Hospital for new or follow-up appointments were screened for the study. Patients with an oral mucosa abnormality that appeared clinically benign (minimally suspicious) and did not have an obvious etiology, such as trauma, were included in the study.

Data collection

We included 653 patients who underwent oral cytology and histological examination at our hospital from January 2018 to December 2020. The mean age of men ($n=299$) was 58.6 years, and the mean age of women ($n=354$) was 60.4 years. The mean age of all the patients was $59.6 \text{ years} \pm 16.4$ (standard deviation, SD). The clinical diagnoses included 330 malignancies, 131 cases of leukoplakia, 76 cases of lichen planus, 51 cases of benign tumors, 22 cases of papilloma, 22 cases of inflammation, 12 cases of oral epithelial dysplasia, 7 cases of erythroplakia, and 2 cases of pemphigus. Patient characteristics, including age, sex, specimen collection site, and cytological and histological diagnoses, were examined. The specimen collection sites were the tongue, gingiva, floor of the mouth, buccal mucosa, palatal plate, and lips.

Laboratory procedures

Cytology was performed using BD SurePath™ (Becton, Dickinson and Company, Tokyo, JAPAN), and cell samples were collected using the Orcellex® Brush (Becton, Dickinson and Company, Tokyo, JAPAN). After twisting the brush ten times, the head of the cell collector was transferred directly into an alcohol-based liquid in the BD SurePath™ Collection Vial (Becton, Dickinson and Company, Tokyo, JAPAN) and transported to the laboratory. The cells were stained with Papanicolaou stain according to the standard procedure. Oral pathology diagnostic experts confirmed that the samples were appropriate for cytological diagnoses. A detailed cytological assessment of cell quality and yield was performed using the modified 2014 Bethesda Cervical Cytology grading system [12]. The assessment included cellularity, quality of preparation, cell types, microbiota, presence of leukocytes/inflammatory cells, presence of artifacts, and, when applicable, dyskaryotic epithelial changes or features suggestive of SCC. Slides were reported as inadequate if they exhibited poor cellularity, poor fixation (air-dried), and/or thickly spread or obscured elements.

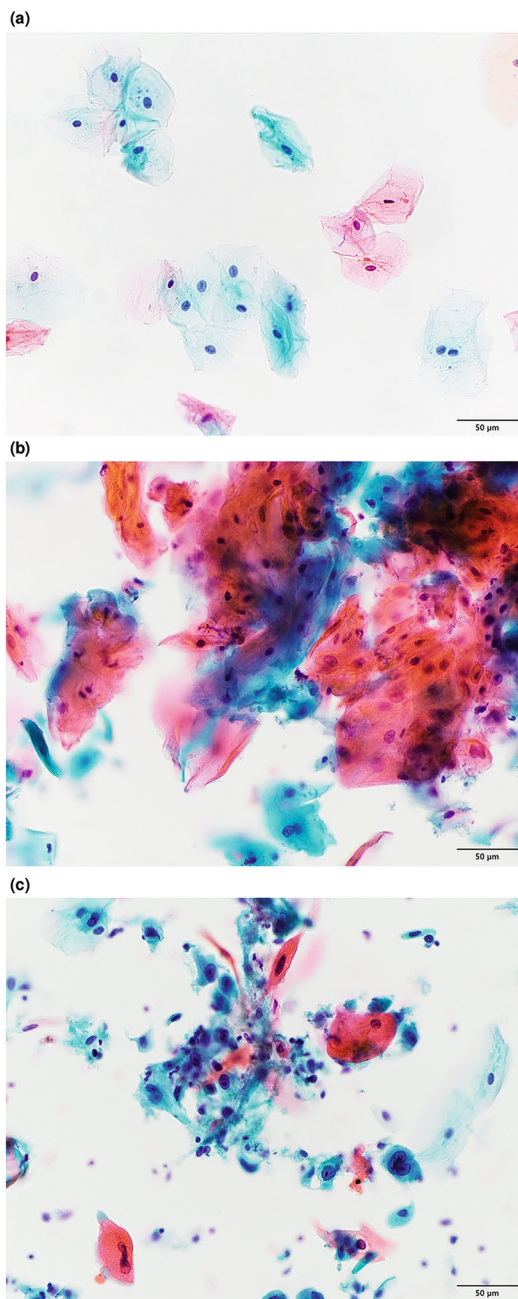


Fig. 1 (a) Negative for tumor cells. Normal superficial and intermediate squamous cells. The background is completely clear. All nuclei are round to ovoid with smooth contours and finely granular, evenly dispersed chromatin. (b) Doubtful for tumor cells. Sheets of atypical squamous cells. The nuclei are haphazardly oriented, and the axes of different nuclei are not parallel. Orangeophilic cells represent abnormal variations in nuclear size and hyperchromasia. (c) Positive for tumor cells. A loosely cohesive sheet of highly atypical, immature basal, or para-basal-like squamous cells. The nuclear-to-cytoplasmic ratio is markedly increased. Nuclei are highly hyperchromatic and chromatin is coarse. Some cells show an irregular nuclear contour and/or small nucleoli. Some bizarre orangeophilic cells represent atypical keratinization. Those cells may have opaque, nearly black nuclei with smudged chromatin

Cytological diagnosis

All Papanicolaou-stained LBC slides were independently assessed by at least two of five oral pathology diagnostic experts. Any discrepancy in the assessment was settled by consensus. All participating experts had passed the board examination of the Japanese Society of Pathology for oral pathology and had been practicing for >7 years. The cytological diagnosis was divided into three levels: negative (Fig. 1a), doubtful (Fig. 1b), and positive (Fig. 1c). A “positive” diagnosis signified that malignant cells were observed; “doubtful” signified malignant cells were suspected but not confirmed; and “negative” signified no atypical cells were observed in the smear [13].

Histological diagnosis

Histological slides were stained with hematoxylin-eosin and examined by at least two oral pathology diagnostic experts. Another oral pathology diagnostic expert was consulted to obtain a diagnosis by consensus in case of discrepancies. The histological findings were classified into nine categories: squamous cell carcinoma, high-grade dysplasia, low-grade dysplasia, epithelial hyperplasia, lichen planus, inflammation, benign tumor, other malignancy, and others. “Superficial-differentiated SCC” was defined as a type of squamous cell carcinoma accompanied by well-differentiated keratinocytes lacking atypia on the surface (Fig. 2a). The histology of all SCC cases was reviewed to determine the percentage of superficial-differentiated SCC. The evaluation was performed independently by four oral pathology diagnostic experts, who determined the outcome of each case by majority vote.

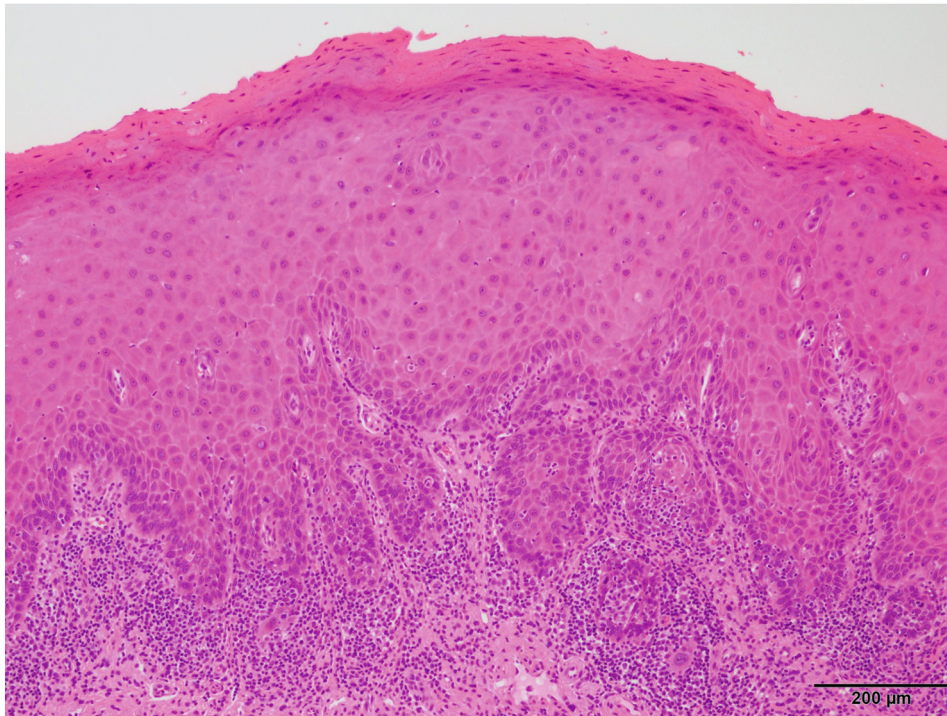
Statistical analysis

Data were entered into a database using Microsoft Excel (Microsoft Inc., Redmond, WA, USA). To examine diagnostic ability via cytological and histological examinations, histology was classified as negative and positive (SCC) and cytology as negative (negative) and positive (doubtful, positive). Then, sensitivity, specificity, accuracy, positive predictive values, and negative predictive values were calculated. All statistical analyses were performed using Prism version 9 (GraphPad Software, CA, USA).

Results

The participants were comprised of 54% women ($n=354$) and 46% men ($n=299$) (Table 1). The cytological results were classified as negative in 436 (66.8%) patients, doubtful in 148 (22.7%), positive in 67 (10.3%), and inadequate material in 2 (0.3%). The tongue ($n=259$ [39.7%]) was the most common collection site, followed by the gingiva ($n=247$ [37.8%]), buccal mucosa ($n=93$ [14.2%]), palate ($n=40$ [6.1%]), lip ($n=13$ [2.0%]), and floor of the mouth ($n=1$ [0.2%]) (Table 2).

(a)



(b)

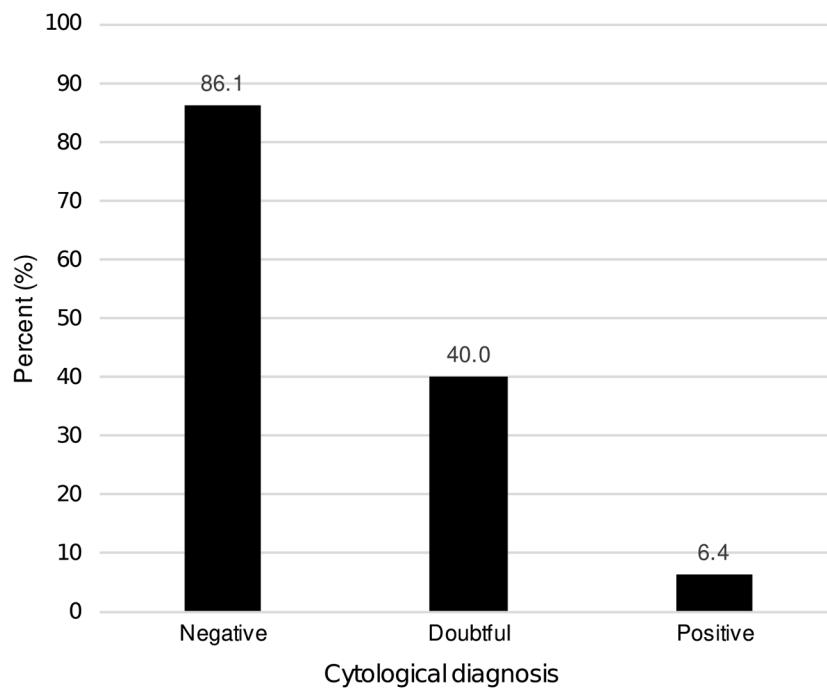


Fig. 2 (a) Typical superficial-differentiated squamous cell carcinoma in a case with false-negative cytological diagnosis, with the deep epithelium showing downward proliferation and tumor cell invasion in the underlying tissues, and keratinocytes in the superficial layers of the epithelium without atypia (b) Percentage of superficial-differentiated squamous cell carcinoma in each cytological diagnostic category. The percentages are shown above the columns

Table 1 Number of patients

	Male patients	Female patients	Total number of patients
Negative	186	250	436
Doubtful	78	70	148
Positive	35	32	67
Inadequate material	0	2	2
Total	299	354	653

In patients with a negative cytological diagnosis, several lesions had weak atypia, which was characterized by abnormalities such as epithelial hyperplasia, lichen planus, and inflammation (Table 3). Of 436 patients with a negative cytological diagnosis, 36 (8.3%) had a histological diagnosis of SCC. Among them, one had recurrence. Based on histological diagnosis, tumor cells were located only in the deep margin of the lesion. Of 67 patients with a positive cytological diagnosis, 47 (70.1%) and 13 (19.4%) had a histological diagnosis of SCC and oral epithelial dysplasia, respectively. In patients with a doubtful cytological diagnosis, the histological diagnoses included SCC, oral epithelial dysplasia, inflammation, epithelial hyperplasia, and oral lichen planus.

The sensitivity of cytology for detecting cancer cells was 69%, and the specificity for detecting non-neoplastic cells was 75% (Table 4). Its positive and negative predictive values were 38% and 92%, respectively.

Based on a histopathologic evaluation of false-negative cytological and histological diagnosis of SCC, 31 (86.1%) of 36 patients had superficial-differentiated SCC (Fig. 2b). Among them, nine had verrucous SCC. Of the 35 patients with doubtful cytological and histological diagnoses of SCC, 14 (40.0%) presented with superficial-differentiated SCC and 1 with verrucous SCC. In contrast, only 3 (6.4%) of the 47 patients with positive cytological and histological diagnoses of SCC had superficial-differentiated SCC.

Discussion

Oral cancer should be appropriately diagnosed to determine treatment course, and early diagnosis is beneficial. There are two types of diagnosis (oral cytological and histological). Oral cytology is a widely used simple, noninvasive test. In addition, methods for the early diagnosis of oral cancer, such as oral cancer screening, are actively promoted, and they are considered effective for the early

diagnosis of oral cancer and the detection of recurrent tumors. However, oral cytological and histological diagnoses are not always consistent, and a definitive diagnosis cannot be obtained via oral cytology alone [14].

The male-to-female ratio of patients who underwent cytology at our hospital was 1:1.18, with a slight tendency toward female predominance. This sex difference was similar to that reported in other clinical studies on oral mucosal diseases [15]. In this study, the tongue was the most common specimen collection region, followed by the gingiva. Based on the 2018 data from the Japan Society for Head and Neck Cancer Registry Committee, the incidence rates of oral cancer in Japan according to region were 54.7% in the tongue, 23.3% in the gingiva, and 7.8% in the buccal mucosa [16]. Moreover, the results of these regions coincided with those of the specimen collection regions in the present study, indicating that specimens were collected from regions where SCC was most frequently observed.

Recently, LBC is widely used in oral cytology. LBC is also used for standardizing specimen preparation to control the accuracy of cervical screening and is useful in oral cytology [7, 14, 17–25]. More cells can be collected via LBC compared with conventional abrasion cytology [26]. The oral mucosa has more keratinizing lesions than the cervix; thus, the cell collection volume is low, which is disadvantageous. However, this issue can be addressed with LBC in the oral region. Several studies have assessed the accuracy of cytology in the oral cavity [7], but only a few reports focused on the accuracy of LBC, which has a sensitivity of 59.2–97.53% and a specificity of 50.6–99% [14, 18, 19, 21, 23, 25, 27, 28]. The sample sizes in these reports ranged from 89 to 1352. We believe that our study is significant because it examined a relatively large sample size compared with previous reports, and its accuracy is similar to that of other studies.

There were a certain number of false-positive and false-negative results in this research. That is, 36 patients had false-negative results (rate: 8.3%). In general, the cytological diagnosis of oral SCC involves the evaluation of superficial cells stained with orange G with Papanicolaou stain and medium or deep-layer cells stained with light green. It is necessary to evaluate the diversity of superficial cells, such as the appearance of the cytoplasm with a thick or bright stain and hyperchromatic nucleus. In the mid- and deep-layer cells, the nucleus-to-cytoplasmic

Table 2 Number of cytological diagnoses in terms of individual site

	Tongue	Gingiva	Buccal mucosa	Palate	Lip	Floor of the mouth	Total
Negative	156	179	66	29	6	0	436
Doubtful	60	49	23	10	5	1	148
Positive	42	18	4	1	2	0	67
Inadequate material	1	1	0	0	0	0	2
Total	259	247	93	40	13	1	653

Table 3 Cytological versus histological diagnosis

	Negative		Doubtful		Positive		Inadequate material		Total
	Number	Percent	Number	Percent	Number	Percent	Number	Percent	
Squamous cell carcinoma	36	8.3	35	23.6	47	70.1	1	70.1	119
High-grade dysplasia	23	5.3	19	12.8	9	13.4	0	13.4	51
Low-grade dysplasia	35	8.0	19	12.8	4	6.0	0	6.0	58
Epithelial hyperplasia	80	18.3	15	10.1	1	1.5	0	1.5	96
Lichen planus	63	14.4	14	9.5	0	0.0	0	0.0	77
Inflammation	55	12.6	18	12.2	3	4.5	0	4.5	76
Benign tumor	42	9.6	10	6.8	0	0.0	0	0.0	52
Other malignancy	0	0.0	2	1.4	0	0.0	0	0.0	2
Others ¹	102	23.4	16	10.8	3	4.5	1	4.5	122
Total	436		148		67		2		653

¹Others include no malignancy and epulis

Table 4 2 × 2 contingency table for the cytological diagnoses compared to histological diagnoses, the golden standard

Cytological diagnoses	Histological diagnoses	
	Positive (SCC)	Negative (Non-SCC)
Positive	82	133
Negative	36	400
Test	%	
Sensitivity	69	
Specificity	75	
Accuracy	74	
Positive predictive value	38	
Negative predictive value	92	

ratio is high, and the appearance of atypical cells with abnormal nuclear shape and size should be evaluated. A positive diagnosis can be made if there are clearly atypical cells in the middle and deeper layers of the cell layer. However, in cases where only mild atypia of the superficial layer of the cell layer is detected, the diagnosis is less than sufficient. Oral squamous cells are highly differentiated compared with the uterine and esophageal squamous cells [29]. Therefore, in some cases of oral SCC, the superficial layers of the squamous epithelium are highly differentiated, even though the middle to deep layers of the squamous epithelium are highly atypical [25]. In SCC of the cervix, epithelial atypia often originates from the basal layer, and it is replaced in all layers before developing into the intraepithelial and then an invasive carcinoma [30]. Although total displacement carcinomas also exist in the oral squamous epithelium, they are far more likely to be superficial-differentiated than those of the cervix [30]. Therefore, if only the superficial layer is evaluated, they may be underdiagnosed.

The current study evaluated the histological diagnosis of patients with a negative cytological diagnosis. Results showed that these patients had a histological diagnosis of SCC. In total, 31 (86.1%) of the 36 patients presented with superficial-differentiated SCC; these were accompanied with well-differentiated keratinocytes lacking atypia on the surface (Fig. 2a). Among them, nine presented with verrucous SCC. In these cases, cytological diagnosis alone is challenging because only superficial cells can be obtained, and it is not possible to detect highly atypical cells. Therefore, it is difficult to collect tumor cells via oral cytology in superficial-differentiated SCC. In general, oral cancer is challenging to diagnose via oral cytology in borderline lesions because invasion is often present in the deeper layers of the lesion even if superficial atypia is weak [25]. Based on the current study, it is challenging to evaluate the malignant potential of superficial-differentiated SCC via oral cytology, and a histological diagnosis is necessary. The causes of false-negative results include poor specimens and cell determination errors [15].

Poor-quality specimens can be caused by low cell counts, overlapping cells, blood cell coating, and specimen dryness. Cell determination errors are caused by overlooking atypical cells caused by low atypical cell counts, thereby underestimating the degree of cellular atypia and recognizing cancer cells as non-epithelial cells. One patient with a negative cytological diagnosis presented with recurrent SCC. In this case, tumor cells were present only in the deep part of the lesion, and no malignant findings were observed in the coated epithelium. In addition, 4 of 36 patients had low cell counts, thereby making it difficult to detect atypical cells, which may have led to underestimation. False-negative cytology result is more likely to be obtained if the exposed cell area for diagnosis is extremely small or proliferation is significantly limited [31]. False-negative results are likely to occur because basal or parabasal-like atypical cells are challenging to correct, which prevents the collection of useful cells for cytological diagnosis. Sekine et al. [14] reported a false-negative rate of 22.2%, which was acceptable in oral cytology. In the study of Remmerbach, the false-negative rate decreased slightly when LBC was applied instead of the conventional method. However, there was still a significant number of false-negative results [21]. False-negative cytology results may aggravate untreated cancers, which cannot be further treated or followed-up. Therefore, oral cytology itself should be further improved before it can be considered a completely reliable method. Therefore, the rate of false-negative cytology results must be decreased.

In this study, some patients had false-positive results. In several cases, although there was a positive cytological diagnosis, the histological diagnosis was inflammation. Malignant tumors often present with several atypical cells with nuclei. However, these cells are often found in inflammatory conditions such as ulcer margins and *Candida* infections [32]. Patients with false-positive results presented with cells with large nuclei due to reactive changes caused by inflammation.

In relation to these reasons, false-negative and -positive cytological diagnoses may be obtained. Particular attention should be paid to superficial-differentiated SCC, recurrence, and inflammation, as cytology and histology reports may be dissociated. Cytology is a minimally invasive tool that can be used to obtain a definitive diagnosis. However, it cannot be used alone. Histological diagnosis should be comprehensively assessed based on clinical findings, including gross findings, and disease course. It is important to make a comprehensive diagnosis by considering clinical findings and, if necessary, histological diagnosis according to lesion condition.

The current study had several limitations. That is, it was a single center, cross-sectional research. Thus, there was risk of bias. However, only few reports have compared

the cytological and histological diagnoses of LBC. Therefore, this study is significant because it included a relatively large number of cases.

In conclusion, this study retrospectively compared the consistency between oral cytological and histological diagnoses among patients at our institution for the last 3 years. Some patients with a negative cytological diagnosis had a histological diagnosis of SCC, oral epithelial dysplasia, epithelial hyperplasia, and inflammation. Approximately 8.3% of patients with a negative cytological diagnosis had a histological diagnosis of SCC. Therefore, histological diagnosis must be obtained even in patients with a negative cytological diagnosis, and appropriate treatment should be provided if tumor-like lesions are suspected clinically.

Acknowledgements

This work was supported by the KAKENHI program of the Japan Society for the Promotion of Science (grant number: 20K10125).

Author Contribution

All authors contributed to the study conception and design. Material preparation, data collection, pathological diagnosis, and analysis were performed by Katsutoshi Kokubun, Kei Nakajima, Yoshihiko Akashi, and Kenichi Matsuzaka. The first draft of the manuscript was written by Katsutoshi Kokubun, and all authors commented on previous versions of the manuscript. All authors read and approved the final manuscript.

Funding

The authors declare that no funds, grants, or other support were received during the preparation of this manuscript.

Data Availability

The datasets generated and/or analyzed during the current study are available from the corresponding author on reasonable request.

Declarations

Ethical approval and consent to participate

This study was approved by the Clinical Research Ethics Review Committee of Tokyo Dental College. All procedures performed in studies were in accordance with the ethical standards of the Clinical Research Ethics Review Committee of Tokyo Dental College (approval number: 1114) and with the 1964 Helsinki declaration and its later amendments or comparable ethical standards. The Clinical Research Ethics Review Committee of Tokyo Dental College provided the authorization to analyze the data, due to the retrospective nature of the study. All data were anonymized before being used for the analysis. Informed consent: For this type of study, the need for formal consent was waived by the Clinical Research Ethics Review Committee of Tokyo Dental College.

Consent for publication

Not applicable.

Competing Interest

The authors have no relevant financial or non-financial interests to disclose.

Received: 5 January 2023 / Accepted: 24 February 2023

Published online: 11 March 2023

References

1. Bray F, Ferlay J, Soerjomataram I, Siegel RL, Torre LA, Jemal A. Global cancer statistics 2018: GLOBOCAN estimates of incidence and mortality worldwide for 36 cancers in 185 countries. *CA: A Cancer J Clin.* 2018;68:394–424. <https://doi.org/10.3322/caac.21492>.

2. El-Naggar AK, Chan JKC, Grandis JR, Takata T, Slootweg P. WHO classification of head and neck tumours. 4th ed. Lyon: IARC Press; 2017.
3. Cancer Information Service, National Cancer Center, Japan. (2020) Vital Statistics of Japan, Ministry of Health, Labour and Welfare. In: Cancer Statistics. https://ganjoho.jp/reg_stat/statistics/data/dl/index.html. Accessed 1 Aug 2022
4. Moore K, Ford P, Farah C. Support needs and quality of life in oral cancer: a systematic review. *Int J Dental Hygiene*. 2014;12:36–47. <https://doi.org/10.1111/idh.12051>.
5. della Vella F, Lauritano D, Lajolo C, Lucchese A, Di Stasio D, Contaldo M, Serpico R, Petruzzi M. The Pseudolesions of the oral mucosa: Differential diagnosis and related systemic conditions. *Appl Sci*. 2019;9:2412. <https://doi.org/10.3390/app9122412>.
6. McCullough M, Prasad G, Farah C. Oral mucosal malignancy and potentially malignant lesions: an update on the epidemiology, risk factors, diagnosis and management. *Aust Dent J*. 2010;55:61–5. <https://doi.org/10.1111/j.1834-7819.2010.01200.x>.
7. Alsarraf H, Kujan A, Farah O CS. The utility of oral brush cytology in the early detection of oral cancer and oral potentially malignant disorders: a systematic review. *J Oral Pathol Med*. 2018;47:104–16. <https://doi.org/10.1111/jop.12660>.
8. Remmerbach TW, Weidenbach H, Müller C, Hemprich A, Pomjanski N, Buckstegge B, Böcking A. Diagnostic value of nucleolar organizer regions (AgNORs) in brush biopsies of suspicious lesions of the oral cavity. *Anal Cell Pathol*. 2003;25:139–46.
9. Kujan O, Desai M, Sargent A, Bailey A, Turner A, Sloan P. Potential applications of oral brush cytology with liquid-based technology: results from a cohort of normal oral mucosa. *Oral Oncol*. 2006;42:810–8. <https://doi.org/10.1016/j.oraloncology.2005.11.024>.
10. Olms C, Hix N, Neumann H, Yahiaoui-Doktor M, Remmerbach TW. Clinical comparison of liquid-based and conventional cytology of oral brush biopsies: a randomized controlled trial. *Head Face Med*. 2018;14:9. <https://doi.org/10.1186/s13005-018-0166-4>.
11. Kujan O, Pemberton MN, Schwarz M, Sloan P. Evaluation of an innovative oral brush for potential applications using liquid based cytology. *J Oral Sci*. 2018;60:45–50. <https://doi.org/10.2334/josnusd.16-0702>.
12. Nayar R, Wilbur DC. The Bethesda System for reporting cervical cytology: definitions, Criteria, and Explanatory Notes. Cham: Springer International Publishing; 2015.
13. Matsuzaka K, Hashimoto K, Nakajima K, Horikawa T, Kokubun K, Yano H, Sakamoto M, Murakami S, Yakushiji T, Kasahara K, Katakura A. Morphological analysis of relationship between oral cytology and biopsy in diagnoses of leukoplakia or oral lichen planus. *J Japanese Soc Evid Dent Prof*. 2016;8:22–8. <https://doi.org/10.15041/isedp.8.22>.
14. Sekine J, Nakatani E, Hideshima K, Iwahashi T, Sasaki H. Diagnostic accuracy of oral cancer cytology in a pilot study. *Diagn Pathol*. 2017;12:27. <https://doi.org/10.1186/s13000-017-0618-3>.
15. Nishimuta F, Yada N, Yoshiga D, Kokuryo S, Otani Y, Tsurushima H, Sakaguchi O, Tanaka J, Yoshioka I. Clinical study of the Exfoloatove cytology on oral mucosal lesions in Kyusyu Dental University Hospital. *J Jpn Oral Medicine*. 2020;26:70–6. <https://doi.org/10.6014/jjsom.26.70>.
16. Japan Society for Head and Neck Cancer Cancer Registry Committee. (2021) Report of Head and Neck Cancer Registry of Japan Clinical Statistics of Registered Patients, 2018. http://www.jshnc.umin.ne.jp/pdf/HNCreport_2018.pdf
17. Hayama FH, Motta ACF, Silva A, de PG, Migliari DA. Liquid-based preparations versus conventional cytology: specimen adequacy and diagnostic agreement in oral lesions. *Med Oral Patol Oral Cir Bucal*. 2005;10:115–22.
18. Navone R, Burlo P, Pich A, Pentenero M, Broccoletti R, Marsico A, Gandolfo S. The impact of liquid-based oral cytology on the diagnosis of oral squamous dysplasia and carcinoma. *Cytopathology*. 2007;18:356–60. <https://doi.org/10.1111/j.1365-2303.2006.00402.x>.
19. Navone R, Pentenero M, Gandolfo S. Liquid-based cytology in oral cavity squamous cell cancer. *Curr Opin Otolaryngol Head Neck Surg*. 2011;19:77–81. <https://doi.org/10.1097/MOO.0b013e328328343af10>.
20. Noda Y, Kondo Y, Sakai M, Sato S, Kishino M. Galectin-1 is a useful marker for detecting neoplastic squamous cells in oral cytology smears. *Hum Pathol*. 2016;52:101–9. <https://doi.org/10.1016/j.humpath.2016.01.014>.
21. Remmerbach TW, Pomjanski N, Bauer U, Neumann H. Liquid-based versus conventional cytology of oral brush biopsies: a split-sample pilot study. *Clin Oral Invest*. 2017;21:2493–8. <https://doi.org/10.1007/s00784-017-2047-9>.
22. Jajodia E, Raphael V, Shunyu NB, Ralte S, Pala S, Jitani AK. Brush cytology and AgNOR in the diagnosis of oral squamous cell carcinoma. *ACY*. 2017;61:62–70. <https://doi.org/10.1159/000451050>.
23. Goodson ML, Smith DR, Thomson PJ. Efficacy of oral brush biopsy in potentially malignant disorder management. *J Oral Pathol Med*. 2017;46:896–901. <https://doi.org/10.1111/jop.12627>.
24. Osaka R, Hayashi K, Onda T, Shibahara T, Matsuzaka K. Evaluation of Liquid based cytology for Tongue squamous cell carcinoma: comparison with conventional cytology. *Bull Tokyo Dent Coll*. 2019;60:29–37. <https://doi.org/10.2209/tdcpublication.2018-0015>.
25. Sukeyawa S, Ono S, Nakano K, Takabatake K, Kawai H, Nagatsuka H, Furuki Y. Clinical study on primary screening of oral cancer and precancerous lesions by oral cytology. *Diagn Pathol*. 2020;15:107. <https://doi.org/10.1186/s13000-020-01027-6>.
26. Budak M, Senturk MB, Kaya C, Akgol S, Bademkiran MH, Tahaoğlu AE, Yildirim A, Büyükbayram H. A comparative study of conventional and liquid-based cervical cytology. *Ginekol Pol*. 2016;87:190–3. <https://doi.org/10.17777/gp/60980>.
27. Deuerling L, Gaida K, Neumann H, Remmerbach TW. Evaluation of the Accuracy of Liquid-Based oral brush cytology in screening for oral squamous cell carcinoma. *Cancers (Basel)*. 2019;11:1813. <https://doi.org/10.3390/cancers11111813>.
28. Kawaharada M, Maruyama S, Yamazaki M, Abé T, Chan NN, Funayama A, Uenoyama A, Akimori T, Tomihara K, Tanuma JI. Clinicopathologic factors influencing the screening accuracy of oral cytology: a retrospective cohort study. *Oncol Lett*. 2022;24:1–8. <https://doi.org/10.3892/ol.2022.13505>.
29. Kobayashi T, Maruyama S, Abé T, Cheng J, Takagi R, Saito C, Saku T. Keratin 10-positive orthokeratotic dysplasia: a new leukoplakia-type precancerous entity of the oral mucosa. *Histopathology*. 2012;61:910–20. <https://doi.org/10.1111/j.1365-2559.2012.04283.x>.
30. Sekine J, Hideshima K, Iwahashi T, Watanabe M, Kanno T, Nariai Y. Management of squamous intraepithelial lesion as new cytological diagnostic class in the Bethesda system in oral cytology -correlation between the Bethesda system and the Papanicolaou/three-grade classifications-. *J Jpn Soc Clin Cytol*. 2017;56:203–9. <https://doi.org/10.5795/jjssc.56.203>.
31. Suzuki T, Kikuchi T, Yoshida Y, Sato K, Takano N, Tanaka Y, Nomura T. A study of New Cytodiagnosis Report Format for Liquid-based oral cytology in squamous cell carcinoma. *Jpn J Oral Diag/Oral Med*. 2018;31:187–92. <https://doi.org/10.15214/jsodom.31.187>.
32. Speight PM. Update on oral epithelial dysplasia and progression to Cancer. *Head and Neck Pathol*. 2007;1:61–6. <https://doi.org/10.1007/s12105-007-0014-5>.

Publisher's Note

Springer Nature remains neutral with regard to jurisdictional claims in published maps and institutional affiliations.