

RESEARCH

Open Access



Effect of different surface treatments on resin-matrix CAD/CAM ceramics bonding to dentin: in vitro study

Hanan Fathy¹, Hamdi H. Hamama^{1*}, Noha El-Wassefy² and Salah H. Mahmoud¹

Abstract

Background: Evaluating the effect of different surface treatment methods on the micro-tensile bond strength (μ TBS) of two different resin-matrix computer-aided design/computer-aided manufacturing (CAD/CAM) ceramics (RMCs).

Methods: A standardized inlay preparations were performed on 100 intact maxillary premolars. According to the type of the restorative material, the teeth were randomly divided into two equally sized groups ($n = 50$): (polymer-infiltrated ceramic (Vita Enamic) and resin-based composites (Lava Ultimate)). The inlays were fabricated using CAD/CAM technology. In each group, the specimens were randomly assigned to five subgroups ($n = 10$) according to the surface treatment method: group 1 used was the control group (no surface treatment); group 2, was treated with air abrasion with $50 \mu\text{m Al}_2\text{O}_3$ (A) and universal adhesive (UA); group 3, was treated with air abrasion with $50 \mu\text{m Al}_2\text{O}_3$ (A) and silane coupling agent (S); group 4, was treated with hydrofluoric acid (HF) and universal adhesive (UA) and group 5, was treated with Hydrofluoric acid (HF) + silane coupling agent (S). The inlays were then cemented to their respective preparations using dual-cure self-adhesive resin cement (RelyX U200, 3 M ESPE) according to the manufacturer's instructions. The μ TBS test was conducted in all groups, and stereomicroscope and scanning electron microscope were used to inspect the failure mode. The data were statistically analyzed using a two-way analysis of variance (ANOVA) and Tukey's post-hoc multiple comparison tests at a significance level of $p < 0.05$.

Results: Surface treatments significantly increased the μ TBS of the materials compared to the control group ($p < 0.05$). For CAD/CAM RBCs, the μ TBS value highest in group 2 whereas, for PICN, the μ TBS value was highest in group 3. Cohesive failure of CAD/CAM restorative material was the most predominant mode of failure in all treated groups, whereas adhesive failure at restoration-cement interface was the most predominant failure mode in the control group.

Conclusion: Surface treatments increase the μ TBS of resin-matrix CAD/CAM ceramics to tooth structure. Air abrasion followed by universal adhesive and hydrofluoric acid followed by silane application appears to be the best strategies for optimizing the bond strength of CAD/CAM RBCs and PICN respectively.

Keywords: CAD/CAM, Hybrid ceramics, Indirect restorations, Inlays, Micro-tensile bond strength, Nano-ceramics, Polymer-infiltrated ceramics, Resin-based composites, Resin-matrix ceramics

Background

Since 1990s, indirect esthetic restorations have gained popularity, and their use has increased significantly. They were introduced to overcome some of the drawbacks

*Correspondence: hamdy@connect.hku.hk

¹ Conservative Dentistry Department, Faculty of Dentistry, Mansoura University, Mansoura 35516, Egypt

Full list of author information is available at the end of the article



© The Author(s) 2022. **Open Access** This article is licensed under a Creative Commons Attribution 4.0 International License, which permits use, sharing, adaptation, distribution and reproduction in any medium or format, as long as you give appropriate credit to the original author(s) and the source, provide a link to the Creative Commons licence, and indicate if changes were made. The images or other third party material in this article are included in the article's Creative Commons licence, unless indicated otherwise in a credit line to the material. If material is not included in the article's Creative Commons licence and your intended use is not permitted by statutory regulation or exceeds the permitted use, you will need to obtain permission directly from the copyright holder. To view a copy of this licence, visit <http://creativecommons.org/licenses/by/4.0/>. The Creative Commons Public Domain Dedication waiver (<http://creativecommons.org/publicdomain/zero/1.0/>) applies to the data made available in this article, unless otherwise stated in a credit line to the data.

associated with direct filling techniques particularly in massively decayed or fractured posterior teeth [1–3].

With the availability of computer-aided design/computer-aided manufacturing (CAD/CAM) technology, indirect restorations with superior marginal and internal fit can be fabricated in a single appointment [4–6]. Also, the application of homogeneous industrial ceramic or composite blocks has resulted in fewer material failures during fabrication and clinical application [4, 7]. These blocks have fewer pores and flaws than do hand-built materials [8].

Ceramics and indirect resin-based composites have been widely used for indirect restorations because of their tooth-colored properties. However, the properties of the two materials differ greatly. Despite the remarkable optical properties and natural tooth-like appearance of the ceramics, their potential disadvantages include abrasion of the opposing dentition because of their high hardness and risk of brittle fracture and chipping [9, 10]. In contrast, resin composites cause less wear to the opposing dentition, are less brittle, are easier to repair and are more fracture resistant [11–13]. Nonetheless, their color stability is inferior, and the material wears down more quickly than ceramics [14].

Recently, Resin-matrix CAD/CAM ceramics (RMCs) have been developed. These materials combine the positive advantages of both ceramics and polymers [4, 15]. They have been referred to as “nano-ceramics” or “hybrid ceramics” but these terms do not accurately reflect the material’s precise chemical composition; therefore they are supposed to be only commercial terms [4, 16]. Due to the presence of both ceramic and polymer phases, RMCs are less brittle than ceramics, have superior flexural strength, machinability, and edge stability [17]. RMCs are further classified according to their industrial polymerization mode and microstructure into: high-temperature polymerized resin-based composites (RBCs) with dispersed ceramic fillers and high-temperature/high-pressure polymer-infiltrated ceramic network (PICN) [4, 18, 19].

CAD/CAM RBCs have a predominant organic phase and consist of a highly cross-linked polymeric matrix reinforced by nano or nano-hybrid ceramic fillers [4, 18]. Lava Ultimate, a CAD/CAM RBC material, is composed of silica and zirconia nano-fillers in the form of dispersed or aggregated particles (80 wt%) and urethane dimethacrylate (UDMA) as the resin matrix (20 wt%) [18, 20].

PICN material has a predominant inorganic phase [18]. It consists of a porous feldspar ceramic network that has been infiltrated by a polymer; therefore, it consists of two continuous interpenetrating networks, one composed of ceramic material and the other of the polymer [21]. The presence of two interconnected phases

within PICN material, typically restricts crack propagation because of interfacial crack deflection [4, 21]. Vita Enamic (VE) is the PICN material currently available commercially. This material constructed by the infiltration of a pre-sintered glass-ceramic network (86 wt%) conditioned by a coupling agent with triethylene glycol dimethacrylate (TEGDMA) (14 wt%) by capillary action [20–22].

Effective adhesive bonding is crucial for the long-term success of indirect restorations because it minimizes the microleakage, improves marginal adaptation and increases the fracture strength [23–25]. There are two interfaces involved in the adhesive bonding of indirect restorations: the first is the interface between the tooth structure and resin cement which has been extensively studied and documented [26–28]. The second interface is the interface between the fitting surface of the indirect restoration and resin cement. Although adhesive bonding to dental ceramics has been extensively studied, data on the bonding properties of RMCs are limited [29, 30].

The industrial fabrication of RMCs using high temperature (~ 100 °C) and/or high pressure polymerization (~ 150 MPa) has significantly enhanced their mechanical properties [12, 16, 18, 31]. However, the high degree of conversion achieved has reduced the number of accessible free carbon-carbon double bonds on the material’s surface, which hinders its ability to bond with resin cement [11]. Therefore, the fitting surface of the restoration must be treated to obtain a reliable bond with resin cement [11, 32]. Various surface treatment methods have been proposed to improve the bonding between the restoration and resin cement via micromechanical retention (e.g., alumina air abrasion or acid etching) or chemical bonding (e.g., silane coupling agent (S) or universal adhesive (UA)/resin primer) [18, 23, 33].

A systematic review was performed to determine whether CAD/CAM RMCs are clinically efficient materials for indirect restorations [34]. The results, indicated that CAD/CAM resin-based composite can be considered a reliable material for partial coverage restorations with clinical performance comparable to that of glass ceramic restorations [34]. However, the optimal surface treatment method is still debatable and showed variation among the reviewed studies. Also, research works that have been conducted to evaluate the effect of various surface treatments on micro-tensile bond strength (μ TBS) between both types of RMCs and resin cements have been scarce so far. Therefore, the aim of the current study was to evaluate the effects of various surface treatment methods on μ TBS between both types of RMCs and resin cement. The null hypothesis was that different surface treatment methods would not affect μ TBS of resin-matrix CAD/CAM ceramic materials.

Methods

Materials

In this study, two different resin-matrix CAD/CAM ceramics were used: CAD/CAM resin-based composites (Lava Ultimate, 3 M ESPE, St Paul, MN, USA) and polymer-infiltrated ceramics (Vita Enamic, VITA Zahnfabrik, Bad Säckingen, Germany). The materials used are fully described in (Table 1).

Specimens selection

Sound extracted maxillary premolars were collected and a hand scaler (Zeffiro, Lascod, Florence, Italy) was used to remove calculus and soft tissue deposits. The teeth were then cleaned with a fine pumice water slurry and a rubber cup. All collected teeth were stored in 1% Chloramine-T solution as a disinfectant for 3 days. Of these collected teeth, 100 sound teeth free from cracks were selected after examination with a binocular stereo microscope

(SZ TP, Olympus, Tokyo, Japan) at 30× magnification. The crown dimensions of the selected teeth as measured with a digital caliper, were as follows: 9.0–9.4 mm bucco-lingual length, 7.0–7.4 mm mesio-distal width and 7.7–8.8 mm cervico-occlusal height. During the study, the teeth were stored in distilled water at 37 ± 1 °C; the water was changed every 5 days with the use of incubator (BTC, BioTech Company, Cairo, Egypt). To prevent the teeth from dehydration, they were removed from the water only during the test procedures [1, 35].

Specimens preparation

The roots of the teeth were embedded in a cylindrical polyvinyl chloride (PVC) ring (1.4 × 2 cm) through the use of an auto-polymerizing acrylic resin (Acrostone, Cairo, Egypt) up to 2 mm below the cemento-enamel junction (CEJ). A centralization guide device designed at the Production of Engineering and Mechanical Design Department, Faculty of Engineering, Mansoura

Table 1 Materials used in the study

Material	Specification	Manufacturer	Batch number	Chemical composition
Lava ultimate	CAD/CAM resin-based composite	3 M ESPE, St Paul, MN, USA	N763594	Silica nanomers (20 nm), zirconia nanomers (4–11 nm), nanocluster particles derived from the nanomers (0.6–10 nm), silane coupling agent, resin matrix (Bis-GMA, Bis-EMA, UDMA, and TEGDMA)
Vita enamic	Polymer-infiltrated ceramics	VITA Zahnfabrik, Bad Säckingen, Germany	62,432	Ceramic component: SiO ₂ (58–63), Al ₂ O ₃ (20–23), Na ₂ O (6–11), K ₂ O (4–6), B ₂ O ₃ (0.5–2), CaO (< 1) and TiO ₂ (< 1) Polymer component: methacrylate polymer Ceramic to polymer ratio; 86–14% by weight
RelyX U200	Self-adhesive Dual cure Resin cement	3 M, GmbH, Germany	6,690,509	Base paste: methacrylate monomers containing phosphoric acid groups, methacrylate monomers, silanated fillers, initiator components, stabilizers and rheological additives. Catalyst paste: methacrylate monomers, alkaline (basic) fillers, silanated fillers, initiator components, stabilizers, pigments and rheological additives
Single bond universal	Universal adhesive	3 M ESPE, St Paul, MN, USA	6,743,118	10-MDP, dimethacrylate resins, HEMA, vitrebond copolymer, filler, ethanol, water, initiators and silane
Porcelain primer/bis-silane	Pre-hydrolyzed silane primer	Bisco, Schaumburg, IL, USA	2,000,004,381	Silane with methacrylate (1–10%), acetone (30–70%) and ethanol (30–70%).
Porcelain etchant	Hydrofluoric acid-etch	Bisco, Schaumburg, IL, USA	2,000,001,191	9.5% hydrofluoric acid gel
N-etch	Phosphoric acid-etch	Ivoclar vivadent AG, Schaan, Liechtenstein	Y39063	37% phosphoric acid gel

Bis-GMA Bisphenol A diglycidyl dimethacrylate; *Bis-EMA* Ethoxylated bisphenol A dimethacrylate; *UDMA* Urethane dimethacrylate; *TEGDMA* Triethylene glycol dimethacrylate; *10-MDP* 10-methacryloxydecyl dihydrogen phosphate; *HEMA* Hydroxyethyl methacrylate

University was used to mount the teeth in acrylic resin cylinders (Figs. 1 and 2).

In a high-speed handpiece (W&H, Burmoos, Austria) under copious air-water cooling, a 6-degree tapered fissure diamond instrument (Inlay Prep Kit 4261, Komet, Lemgo, Germany) was used to create standardized inlay cavities. The same operator performed all the preparation steps according to the recommended sequence of specific diamond instruments. After five preparations, each used diamond instrument was replaced to ensure cutting efficacy. For standardized cavity preparation, the used handpiece was affixed to a specially constructed apparatus designed at the Production Engineering and Mechanical Design Department, Faculty of Engineering, Mansoura University (Fig. 3). This device enabled

accurate handpiece movements, resulting in approximately standard divergence of the cavity walls with a standard depth and width [1].

The cavity preparation dimensions were as follows: the pulpal floor depth was 3 mm from the occlusal surface and the bucco-lingual width was more than half the intercuspal distance about 3.5 mm. Each proximal box had an axial wall height of 2 mm and a gingival floor depth of 1.5 mm (Fig. 4). The preparation had rounded internal line angles and butt joint cavo-surface margin. A digital caliper was used to measure the cavity dimensions. After each preparation, the prepared tooth was examined with 5× magnifying loupes (Univet, Rezzato, Italy) to exclude the existence of any disqualifying characteristics such as pulp exposures or cracks.

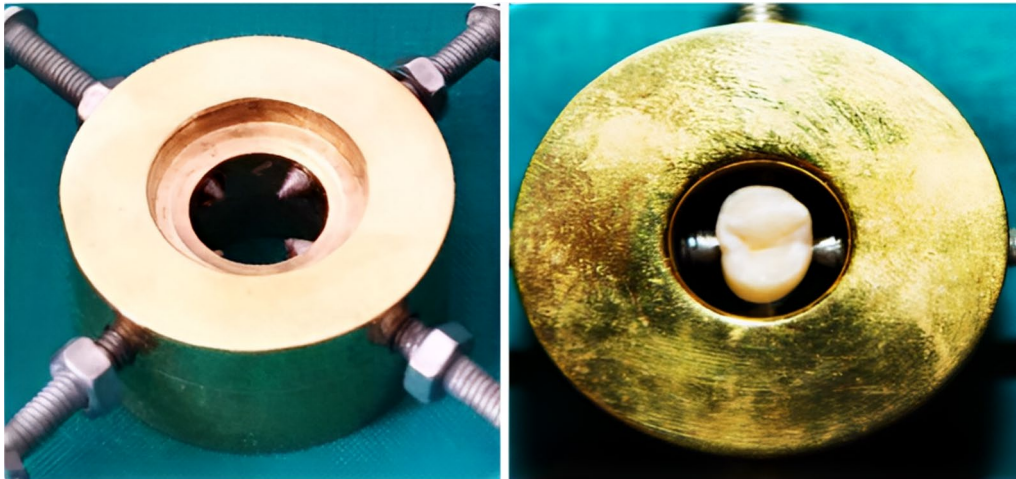


Fig. 1 A specially designed device used for centralization of the tooth during fixation in PVC ring with auto-polymerizing acrylic resin

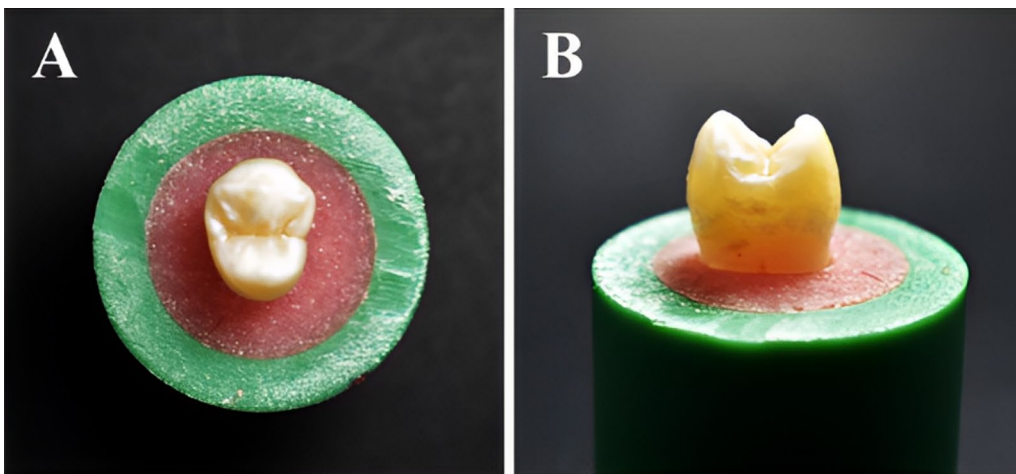


Fig. 2 Selected tooth fixed in acrylic resin using PVC (Poly-vinyl chloride) ring **A** Occlusal view **B** Proximal view



Fig. 3 A specially designed apparatus to which the high-speed handpiece was affixed to standardize the cavity preparation

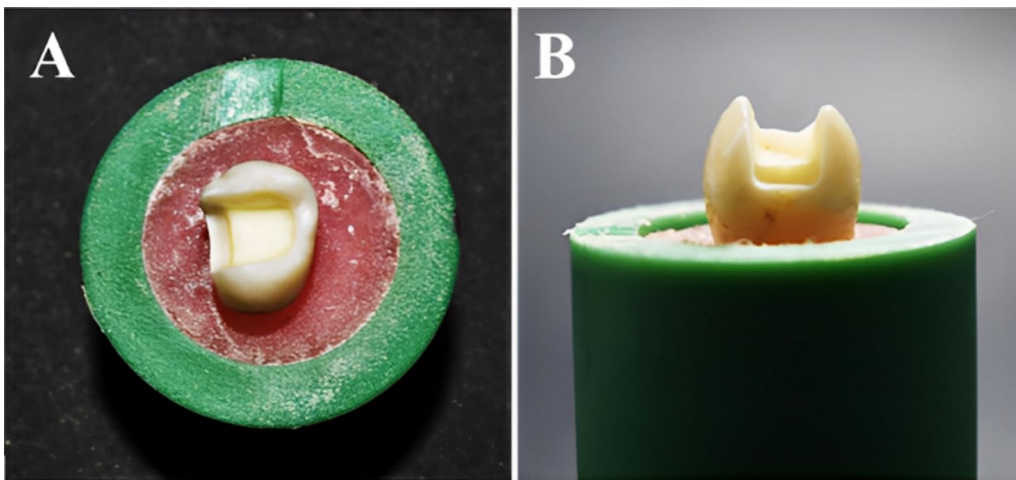


Fig. 4 Tooth preparation **A** Occlusal view **B** Proximal view

Fabrication of the inlays

Inlays were manufactured with CAD/CAM technology using Exocad software (Exocad GmbH, Darmstadt, Germany). Silver powder (CERCON, DeguDent GmbH, Hanau, Germany) was used on the prepared tooth surface to create an opaque surface needed for the scanning process using the CAD scanner (Ceramill Map 400, Amann Girrbach, Koblach, Austria). The anatomical configuration of the inlays was modified using CAD software (Fig. 5). The virtual die spacer was standardized (50 μ m) across all groups. The milling process of the restorations was performed with (Ceramill motion 2, Amann Girrbach, Koblach, Austria).

Following the milling process, adequate fit of the restorations was confirmed using a vinyl polyether silicone material (Fit Checker-Advanced-Blue, GC Corporation, Tokyo, Japan) and restorations were cleaned in an ultrasonic cleaner with 99% isopropanol for 5 min. The prepared teeth were cleaned with pumice and rinsed

thoroughly with water. The polishing procedure for PICN inlays was performed using the Enamic Polishing set (VITA, VITA Zahnfabrik, Bad Säckingen, Germany). RBC inlays were polished manually using diamond paste and silicon tips.

Grouping of specimens

A two stage randomization was used for specimen's allocation by using a table of random numbers. In step one, the specimens (n=100) were randomly allocated into one of two main equal-sized groups (n=50) depending on the type of the CAD/CAM restorative material utilized, those made of resin-based composites and those made of polymer-infiltrated ceramics. In step two, each group was further randomly divided into five subgroups (n=10) based on the method of surface treatment used:

- Group 1: No surface treatment (No TTT): Negative control group.

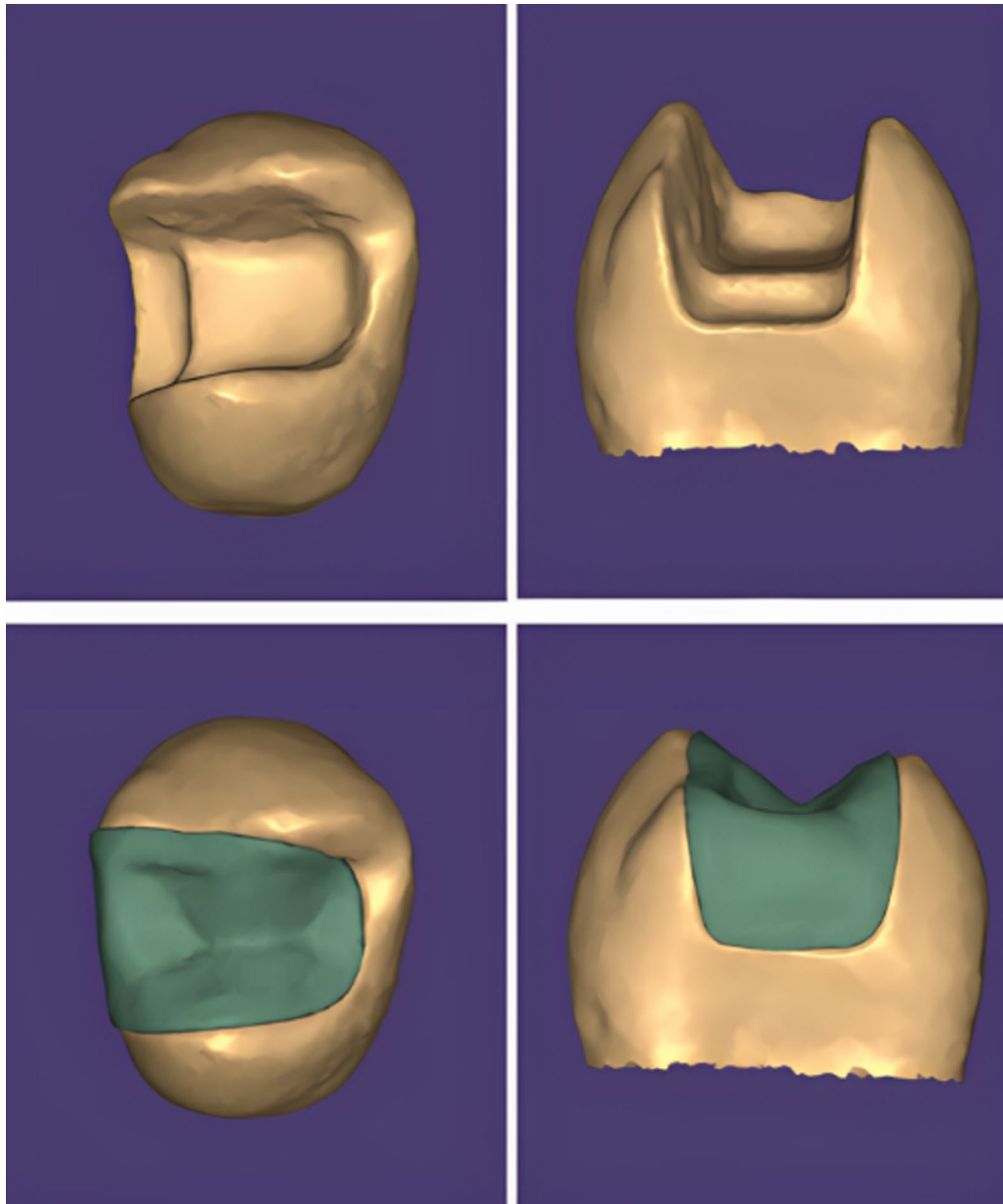


Fig. 5 Scanning and designing process of inlay restoration using Exocad software (Exocad GmbH, Darmstadt, Germany)

- Group 2: Air abrasion and universal adhesive (A + UA): Air abrasion was performed with 50 μm Al_2O_3 at a distance of 10 mm at a pressure of 2 bar for 20 s. The specimens were then cleaned with alcohol, and dried with oil-free air. After air abrasion, Single Bond Universal Adhesive (3 M ESPE, St. Paul, MN, USA) was applied evenly to the cementation surface for 20 s and air-dried for 5 s according to the manufacturer's instructions.
- Group 3: Air abrasion and silane coupling agent (A + S): After air abrasion as described for group 2, a silane coupling agent (Porcelain Primer/Bis-Silane; Bisco, Schaumburg, IL, USA) was applied to the cementation surface for 20 s and air-dried for 5 s according to the manufacturer's instructions.
- Group 4: Hydrofluoric acid and universal adhesive (HF + UA): In accordance with the manufacturer's instructions, 9.5% HF (Porcelain Etchant; Bisco, Schaumburg, IL, USA) was applied to the surface of each specimen for 60 s, followed by water rinsing for 60 s and drying using a water-free air spray. After acid etching, Single Bond Universal Adhesive

(3 M ESPE, St. Paul, MN, USA) was applied evenly to the cementation surface for 20 s and air-dried for 5 s according to the manufacturer's instructions.

- Group 5: Hydrofluoric acid and silane coupling agent (HF + S): After acid etching, as described for group 4, a silane coupling agent (Porcelain Primer/Bis-Silane; Bisco, Schaumburg, IL, USA) was applied to the cementation surface for 20 s and air-dried for 5 s according to the manufacturer's instructions.

Luting procedures

The enamel margins of all prepared teeth were selectively etched with 37% phosphoric acid (N-Etch, Ivoclar Vivadent AG, Schaan, Liechtenstein). To prevent the dentin from being etched, polytetrafluoroethylene (PTFE) tape was applied to the dentin surface prior to the etching step. The inlays were then cemented to the tooth structure using self-adhesive dual-cure resin cement (RelyX U200, 3 M ESPE, St Paul, Minnesota, USA) according to the instructions of the manufacturer. The inlays were seated on the prepared teeth using finger pressure and then they were initially cured for 5 s at a distance of 2.0 mm using LED-curing unit (Elipar, 3 M ESPE, St Paul, Minnesota, USA) at an intensity of 1400 mW/cm². After initial curing, a manual instrument was used to remove excess resin cement. Then an air-inhibiting gel (Glycerine) was applied along the margins to prevent the formation of un-polymerized resin layer. The restored teeth were then subjected to 30 s of light curing through the glycerine from each aspect. An example of the final bonded specimen after adhesive cementation is shown in (Fig. 6).

Micro-tensile bond strength test

The restored teeth in the acrylic resin blocks were mounted in a diamond automated saw (Isomet 4000, Buehler Ltd., Lake Bluff, IL, USA). Using the low speed cutting saw, each specimen was sectioned in occluso-gingival direction under water cooling to produce 1-mm-thick slabs. In order to ensure that the slabs remained in place, the cutting was continued until 1 mm remained. The specimen was then rotated 90° and cut again perpendicular to the occlusal surface to gain 1 ± 0.1 mm² rectangular beams. Each beam consisted of dentin and CAD/CAM restorative material with resin cement at the interface (Fig. 7). To obtain the beams, a final horizontal cut was made at the level of the cemento-enamel junction. Each beam was stored at room temperature in a plastic tight-seal cone containing distilled water and labelled with the tooth of origin and the subgroup.

Each beam was glued by its end in the central groove of Geraldeli's jig using cyanoacrylate based glue (Zapit, Dental Ventures of America, Inc., Corona, CA, USA) (Fig. 7). Zapit accelerator was used to accelerate the hardening of the glue. Geraldeli's jig was then mounted on a Universal testing machine (Instron, Norwood, MA, USA) and a tensile load was applied at a cross-head speed of 0.5 mm/min until the bond through the specimen failed. Bluehill Lite software (Instron, Norwood, MA, USA) then determined the μ TBS in megapascals. Afterwards, specimen fragments were removed carefully from Geraldeli's jig using a scalpel and stored in their respective labelled plastic cones until the failure mode was examined.

All specimens were inspected immediately after fracturing under a stereomicroscope (Olympus model SZ-PT, Tokyo, Japan) at 15× magnification to determine the failure mode. The fractures were categorized as: Type

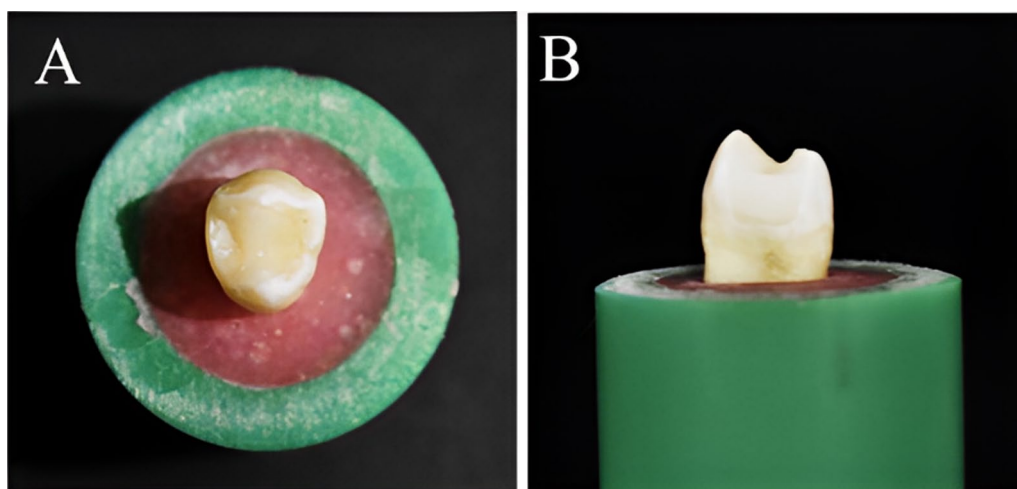


Fig. 6 Final bonded specimen **A** Occlusal view **B** Proximal view

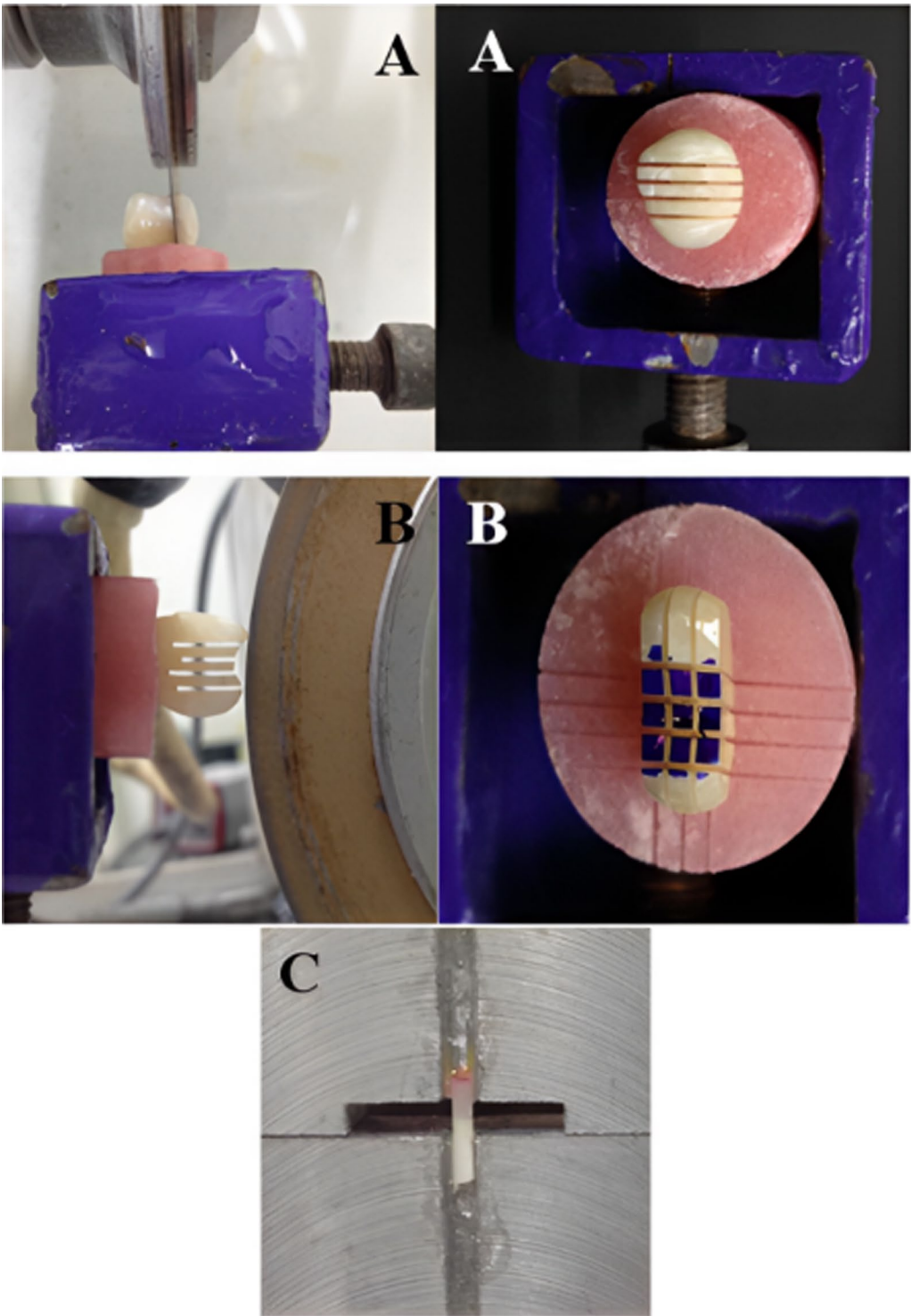


Fig. 7 The specimen preparation for μ TBS testing **A** The specimen was sectioned in occluso-gingival direction **B** The specimen was rotated 90° and cut was made perpendicular to occlusal surface to gain $1 \pm 0.1 \text{ mm}^2$ rectangular beams **C** Beam glued to Geraldini's jig

1 (A-RC): adhesive failure at the restoration–cement interface, Type 2 (A-CT): adhesive failure at the cement-tooth interface, Type 3: cohesive failure in the restoration (C-R), Type 4: cohesive failure in the cement (C-C), Type 5: cohesive failure in the tooth structure (C-T), Type 6: mixed adhesive and cohesive in the restoration and cement (M-RC), Type 7: mixed adhesive and cohesive in the cement and tooth (M-CT). Representative fractured beams from each group were rinsed with ethanol and air-dried. The samples were then mounted on metallic stubs, gold sputtered (SPI Module—Sputter Carbon/Gold Coater, EDEN instruments, Japan) and inspected with scanning electron microscope (SEM) (JSM-6510 LV; JEOL Ltd., Tokyo, Japan) at 200× magnification.

Statistical analysis

Sample size was calculated by Power Analysis and Sample Size Software (version 15, 2017), (PASS, NCSS, LLC, Kaysville, Utah, USA). A total of 100 intact maxillary premolars are required to provide 10 teeth per cell. This design achieves 98% power when an F test is used to test factor A (restorative material) at a 5% significance level and the effect size is 0.400, achieves 90% power when an F test is used to test factor B (surface treatment method) at a 5% significance level and the effect size is 0.400, and achieves 90% power when an F test is used to test the A*B interaction at a 5% significance level and the effect size is 0.400.

Data were tabulated and coded using Microsoft Excel 2016 (Microsoft Corporation, Redmond, WA, USA). Data analysis was performed using Statistical package for social science (SPSS 22, SPSS Inc, Chicago, IL, USA). The distribution of data was statistically checked with the Kolmogorov–Smirnov, and Shapiro-Wilk tests. A parametric two-way analysis of variance (ANOVA) was conducted followed by Tukey’s honestly significant difference (HSD) post-hoc multiple comparison test.

Results

The Kolmogorov–Smirnov and Shapiro-Wilk tests revealed that all μTBS data followed a normal distribution pattern ($p > 0.05$); therefore, a parametric two-way ANOVA was performed, which revealed that the bond strength was significantly affected by the type of restorative material and surface treatment method ($p < 0.05$). The interaction between these two variables was also statistically significant ($p < 0.05$).

Tukey’s HSD post-hoc multiple comparison test revealed that the surface treatments increased the μTBS of both CAD/CAM RBCs and PICN significantly compared to the control group (No surface treatment; $p < 0.05$). The μTBS mean values and standard deviations for all groups along with the results of Tukey’s HSD

post-hoc multiple comparisons between groups are listed in (Table 2).

For CAD/CAM RBCs material, the μTBS mean value was highest in A + UA group, which differed significantly from the μTBS mean values of all the other test groups ($p < 0.05$). HF + UA group had the second highest μTBS mean value, which was significantly higher than HF + S group. In contrast, the difference was not statistically significant between HF + UA group and A + S group ($p > 0.05$). As well, there was no statistical significant difference between A + S group and HF + S group ($p > 0.05$).

For PICN material, HF + S group had the highest μTBS mean value, which was significantly higher than all other test groups ($p < 0.05$). HF + UA group had the second highest μTBS mean value, which was significantly higher than A + UA group ($p < 0.05$). Neither the values of HF + UA and A + S groups nor those of A + S and A + UA groups differed significantly ($p > 0.05$).

Tukey’s HSD post-hoc multiple comparison test also revealed a statistically significant difference in μTBS mean values between RBCs and PICN in A + UA and HF + S groups ($p < 0.05$). In A + UA group, CAD/CAM RBCs material recorded a significant higher μTBS mean value than PICN material, whereas, HF + S group, PICN recorded a higher μTBS mean value than did RBCs. The results also revealed no significant difference between the two materials in the control group, A + S group and HF + UA group ($p > 0.05$), although the CAD/CAM RBCs yielded more favorable results.

Fracture pattern analysis

In all tested groups, type 3 cohesive failure (fracture in CAD/CAM restorative material) was the most predominant mode of failure. Type 1 adhesive failure (at the restoration-cement interface) was most prevalent in the control group, whereas, cohesive and mixed fractures

Table 2 Means (MPa) and Standard deviation (SD) values for different groups and multiple comparisons between means

	RBCs (lava ultimate) μTBS (Mean ± SD)	PICN (vita enamic) μTBS (Mean ± SD)
No TTT (control)	6.39 ± 1.77 ^E	5.44 ± 3.28 ^E
A + UA	30.54 ± 4.29 ^A	16.22 ± 1.34 ^D
A + S	20.63 ± 3.02 ^{BC}	17.42 ± 2.14 ^{CD}
HF + UA	23.56 ± 2.61 ^B	20.93 ± 3.18 ^{BC}
HF + S	17.46 ± 2.76 ^{CD}	27.86 ± 2.69 ^A

Means are arranged from A to E with A are the highest values and E are the lowest values

Means with the same superscripted letters have no significant differences (Tukey HSD; $p > 0.05$)

RBCs Resin-based composites; PICN Polymer-infiltrated ceramic network; A Air abrasion; HF Hydrofluoric acid; S Silane coupling agent; UA Universal adhesive

were most prevalent in all surface treated groups. The percentage values of failure pattern among all groups are illustrated in (Fig. 8), while different types of failure patterns are depicted in (Figs. 9 and 10) using stereomicroscopic and scanning electron microscopic images, respectively.

Discussion

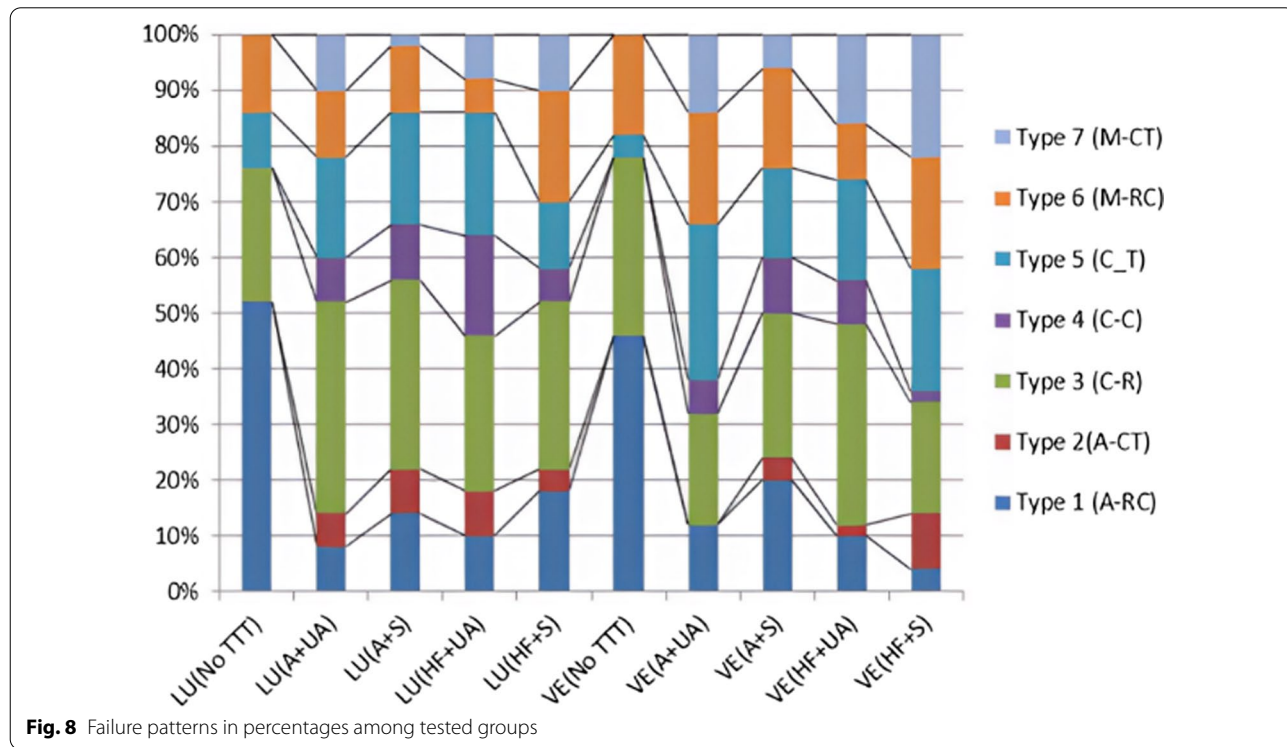
The results of this study, disproved the null hypothesis that different surface treatment methods would not affect the μ TBS of resin-matrix CAD/CAM ceramic materials. The mean μ TBS values of both materials increased significantly following the application of different surface treatments compared to when no surface treatment was applied.

The μ TBS test was selected in this study because it allowed for a more precise evaluation of bond strength than conventional tensile and shear bond strength tests. Because stress distribution during shear testing is not homogenous, cohesive bulk fracture of the substrate away from the bonding interface occurs frequently [2, 36]. Therefore, the shear test offers limited insight into the true bond strength. The conventional shear and tensile bond strengths are also greatly affected by surface or internal flaws in the material. In the μ TBS test, however, these defects are greatly reduced, allowing for a more homogenous and uniform stress distribution due to the small dimensions of the specimens and the small

interfacial bonding zone [2, 36, 37]. Hence, the failure in μ TBS occurs mostly at the adhesive interface enabling the recognition of the weakest part of the adhesive system [36, 38].

Since cohesive failure was the most common mode of failure among the experimental groups treated with A + UA, A + S, HF + UA and HF + S for both CAD/CAM materials, the results of the failure mode analysis supported the μ TBS test results. In contrast, adhesive failure was the leading cause of failure among the untreated control group. This result is consistent with previous studies [23, 36]. Among mode of failures, cohesive failures exhibit the perfect bonding status that can be obtained as the failure arises mainly from flaws within the broken material and not at the interface, whereas, the main cause of adhesive failures is mostly low bond strength at the interface [36, 38–41].

In this study, various mechanical and chemical conditioning techniques were used. Mechanical conditioning via air abrasion or chemical etching using hydrofluoric acid have been shown to increase the surface energy and wettability of the restorative material by roughening their surfaces, thereby enhancing the mechanical interlocking between the CAD/CAM material and the resin cement [18, 42, 43]. Chemical conditioning with a silane coupling agent or universal adhesive (resin primer) has been shown to increase wettability, thereby facilitating the formation of covalent bonds between the restorative



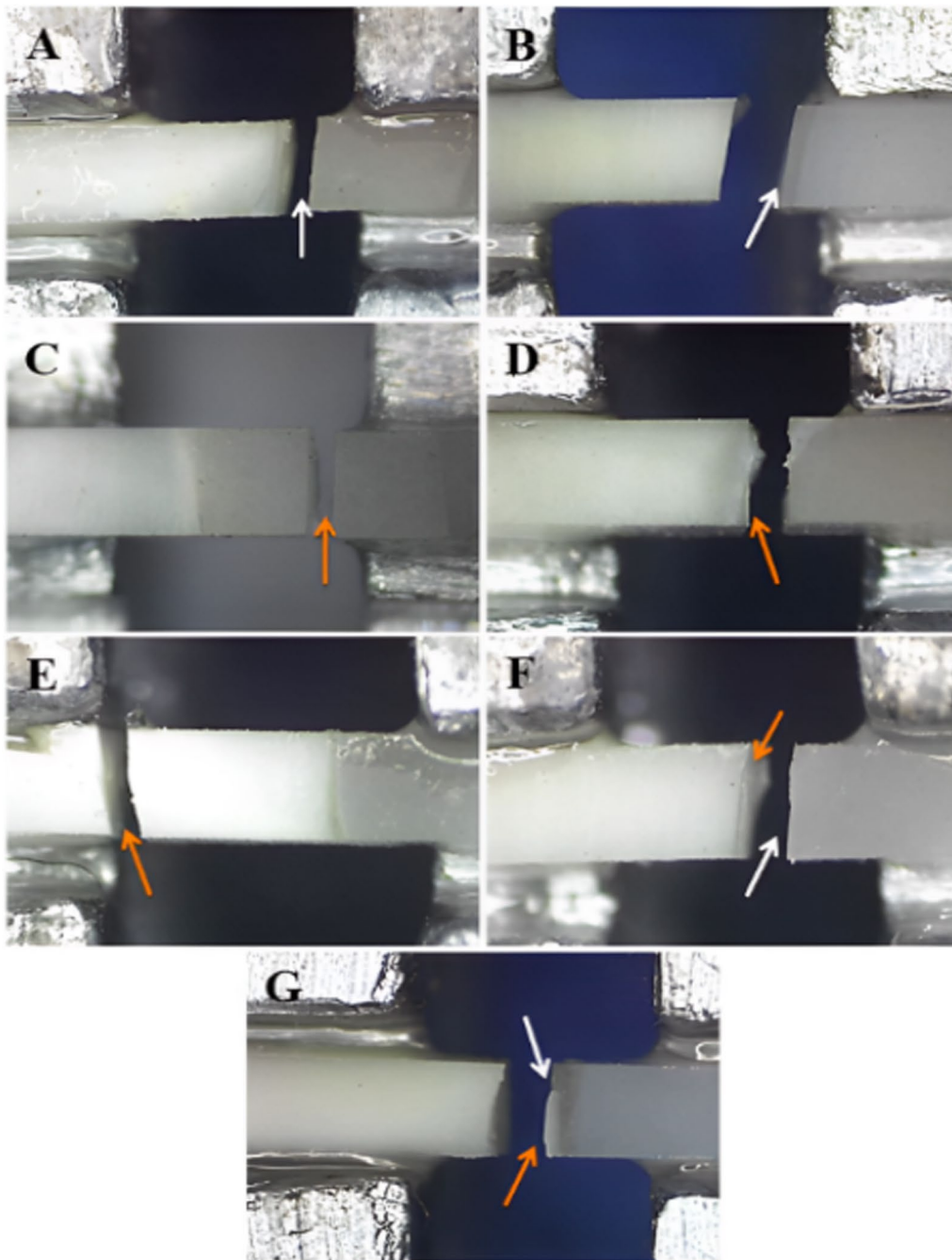


Fig. 9 Stereomicroscopic views of fractured beams showing different failure patterns **A** Adhesive failure in the restoration-cement interface **B** Adhesive failure in the cement-tooth interface **C** Cohesive failure in the restoration **D** Cohesive failure in the cement **E** Cohesive failure in the dentin **F** Mixed adhesive and cohesive in the restoration and cement **G** Mixed adhesive and cohesive in the cement and dentin. White arrows represent adhesive failure; orange arrows represent cohesive failure

(See figure on next page.)

Fig. 10 Scanning electron microscopic (SEM) micrographs of fractured beams showing different failure pattern. **A** Adhesive failure in the restoration-cement interface with some cement remaining on the restoration surface **B** Adhesive failure in the cement-tooth interface with some cement remaining on the tooth surface **C** Cohesive failure in the restoration **D** Cohesive failure in the cement **E** Cohesive failure in the dentin **F** Mixed adhesive and cohesive in the restoration and cement **G** Mixed adhesive and cohesive in the cement and dentin

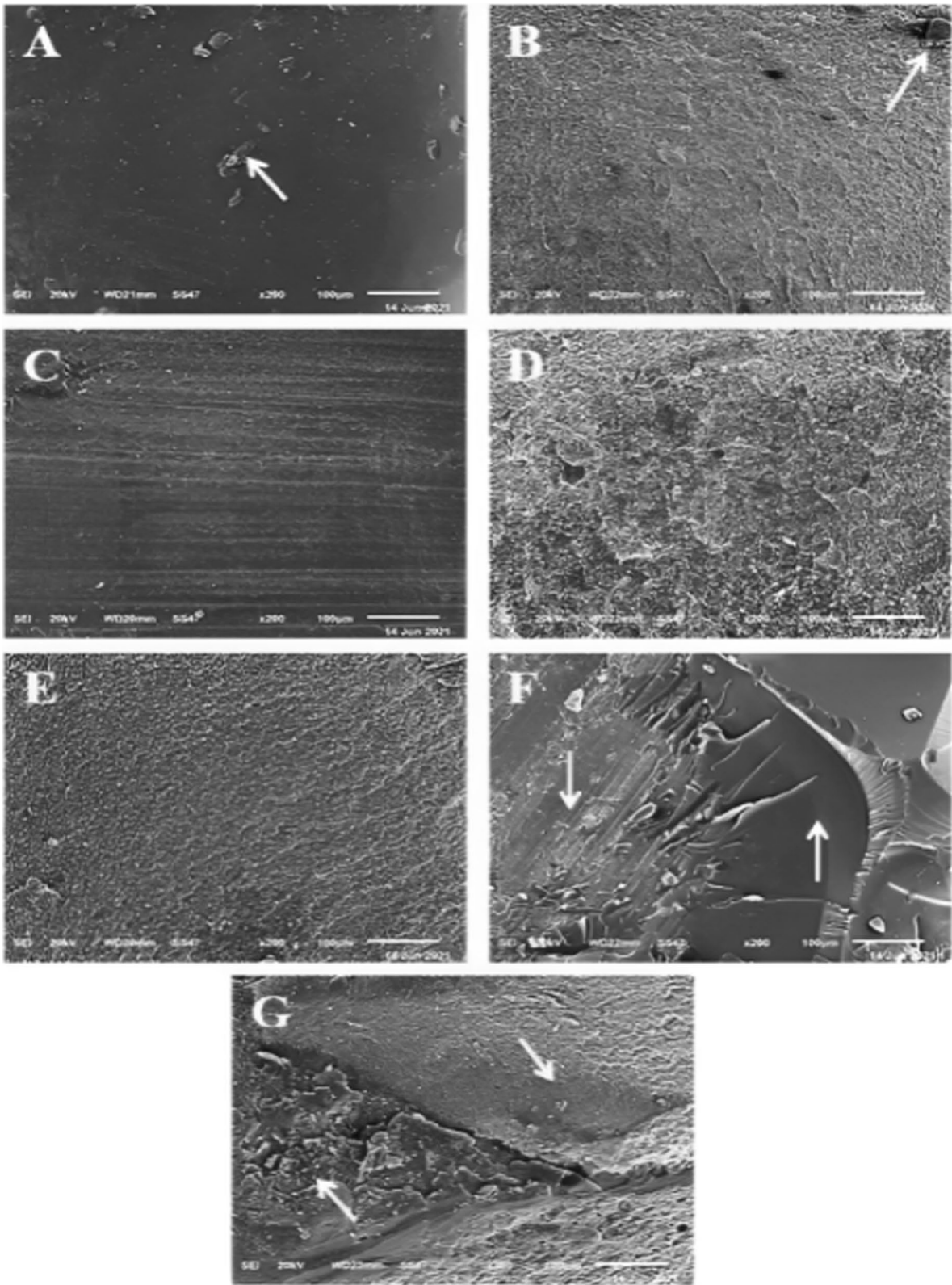


Fig. 10 (See legend on previous page.)

material and the resin cement [2, 23]. A recent systematic review and meta-analysis [18], found that the combination of mechanical and chemical surface treatment methods can enhance the positive effect of each protocol and increase the bonding strength of indirect restorative materials to resin cement.

This *in vitro* study demonstrated that surface treatments increase the μ TBS between RMC restorations and tooth structure by enhancing the bonding to resin cement across all groups. This result is consistent with the results of previous studies [20, 23, 36, 44–49]. However, the optimal chemical and mechanical surface treatment methods for CAD/CAM RBCs and PICN materials differed significantly. This is likely due to the substantial difference in microstructure and composition between the two materials.

μ TBS was greatest for PICN (Vita enamic) when the material treated with hydrofluoric acid followed by the application of a silane coupling agent. This result is consistent with manufacturer's instructions and previous study findings [9, 36, 44, 47]. PICN material consisted of a dominant ceramic network infiltrated by a cross-linked polymer [22, 50]. Due to the microstructure and composition of the material, the ceramic content in the material was expected to guide the surface treatment.

Hydrofluoric acid tends to dissolve the glassy phase of the material, whereas the polymer network remains intact [16, 18, 51]. The remaining polymer network creates a honeycomb structure and, therefore, a high micro-mechanical interlocking potential [18]. Silane coupling agent proved indispensable for use with silica-based ceramic materials because it enhanced the surface's wettability and transforming it into hydrophobic surface, thereby enhancing the chemical bond to the resin cement [9, 52]. Consequently, the silanization process tends to condition the surface to bond to the resin matrix of the luting resin cement, resulting in an effective interaction [9, 44, 52]. Chemical conditioning PICN restorations with universal adhesive resulted in a lower μ TBS results than chemical conditioning with a silane coupling agent. This is likely because the the universal adhesive contains insufficient silane to provide chemical adhesion to a silica-based ceramic surface [51, 53]. This hypothesis is supported by the findings of Abdou et al. [48], and confirmed in a study conducted by Rohr et al. [51], in which the application of universal adhesive in combination with a silane coupling agent yielded the highest bond strength in PICN material.

In this study, air abrasion groups failed to increase the μ TBS of PICN material as effectively as HF. Nonetheless, the resulting bond strength was considerably greater than that of the control group. Subsequently, with the use of a scanning electron microscope, Motevasselian et al.

[9] determined that after air abrasion, the surface of the specimen was relatively homogenous and not deeply pitted, whereas, in specimens that received HF, HF penetrated into the depth of PICN material by chemically reacting with the silica phase of the ceramic component of PICN. Also in the study by Elsaka et al. [36], the application of HF altered the surface texture of PICN material, resulting in the formation of numerous irregular and randomly distributed gaps and micropores, after HF application. Campos et al. [44], found that the bond strength was highest when CoJet Sand (3 M ESPE) and silane were used before aging. However, bond strength decreased significantly after aging, with HF and silane group achieving the highest values in this study.

For CAD/CAM RBCs (Lava ultimate), the combination of air abrasion and universal adhesive containing silane produced the highest μ TBS in comparison with other surface treatment methods. This outcome was consistent with the manufacturer's recommendations. In addition, previous studies demonstrated that alumina air abrasion provided greater bond strength than HF etching for CAD/CAM RBCs [11, 36, 45, 47, 54]. CAD/CAM RBCs are composed of a polymeric matrix reinforced by nano or nanohybrid ceramic fillers [18, 55]. The material, therefore, consists of two phases: a polymer matrix phase and an inorganic ceramic/glass phase [18, 56].

Hydrofluoric acid reacts with silicon dioxide and dissolves only the glassy phase of the CAD/CAM material, whereas alumina air abrasion increases the surface adherent area by roughening both the ceramic and polymer phases of the material [18]. Compared to PICN, CAD/CAM RBCs contains fewer silica particles that can chemically react with HF [18]. Elsaka et al. [36] discovered two continuous interpenetrating networks on the untreated PICN material's surface topography: ceramic and polymer with micropores. The surfaces of the untreated CAD/CAM RBCs were more uniform and contained minute micropores. In the same study [36], the surface of CAD/CAM RBCs after air abrasion had well defined microscopically elevated and depressed areas, whereas, after HF treatment, the surface had only microscopic pores and pits. In an *in vitro* study, Peumans et al. [54] demonstrated that the after mechanical pretreatment with Al_2O_3 or CoJet Sand, bond strength was highest for Lava Ultimate and lowest for Vita Enamic.

μ TBS results for CAD/CAM RBCs treated with universal adhesive were also superior to those treated with silane coupling agents. This finding was consistent with those in previous studies [11, 48]. The universal adhesive used in the current study consists of an acidic functional monomer [10-methacryloyloxydecyl dihydrogen phosphate (10-MDP)], methacrylate monomers and a silane coupling agent. The silane coupling agent provides chemical bond

with silica-based ceramics [57] but it does not participate in any chemical bond with the polymer phase of CAD/CAM RBCs [18]. The 10-MDP monomer in the universal adhesive promotes bonding with zirconia, which is a component of the Lava Ultimate material [18, 58]. In addition, the acid groups of 10-MDP and the copolymer promoted bonding with the polymer phase of the material [18, 51]. In this manner, the universal adhesive tended to bond to both phases of the CAD/CAM RBC material and produced better results compared to silane coupling agents alone.

The current study had some limitations. For instance, only one type of adhesive resin cement was used (self-adhesive resin cement), necessitating the use of multi-step luting agents in future studies. Additionally, during cementation, the use of finger pressure instead of applying standardized load. Furthermore, the absence of an aging procedure, such as storing the specimens in artificial saliva or thermocycling would allow for a more accurate simulation of real-life conditions. Bonding to the tooth structure may be another limitation of this study; failure often occurs at the tooth-cement interface rather than on the surface of the restorative material. The use of HF in various concentrations and air abrasion with different particle sizes should also be further investigated.

Conclusion

Within the limitations of this *in vitro* study, the outcomes demonstrated that surface treatments increase the μ TBS of RMCs, particularly RBCs, to tooth structures. The bond strength for PICN material was highest after the application of HF etching and a silane coupling agent. In contrast, the bond strength of CAD/CAM RBCs materials was highest after air abrasion, followed by the application of universal adhesive.

Acknowledgements

Not applicable.

Author contributions

Conception and study design were done by HHH, NE and SHM. The tests were performed by HF. HF and HHH interpreted the statistical results. The manuscript was written by HF and revised by HHH, NE and SHM. All authors read and approved the final manuscript.

Funding

Open access funding provided by The Science, Technology & Innovation Funding Authority (STDF) in cooperation with The Egyptian Knowledge Bank (EKB).

Availability of data and materials

The data sets used and/or analysed during the current study are available from the corresponding author upon reasonable request.

Declarations

Ethics approval and consent to participate

All procedures performed in this study, were carried out in accordance with relevant guidelines and regulations of Helsinki Declarations. All the experimental protocols were approved by the ethical committee of the Faculty of

Dentistry, Mansoura University with reference number (A13030320). Teeth extracted for therapeutic reasons unrelated to the study were collected, with prior informed consent from healthy individuals who were seeking dental care at the Outpatient Dental Clinic, Faculty of Dentistry at Mansoura University.

Consent for publication

Not applicable.

Competing interests

The authors declare that they have no competing interests.

Author details

¹Conservative Dentistry Department, Faculty of Dentistry, Mansoura University, Mansoura 35516, Egypt. ²Dental Biomaterials Science Department, Faculty of Dentistry, Mansoura University, Mansoura, Egypt.

Received: 31 August 2022 Accepted: 16 December 2022

Published online: 23 December 2022

References

1. Wafai RA, Ibrahim Ali A, Mahmoud SH. Fracture resistance of prepared premolars restored with bonded new lab composite and all-ceramic inlay/onlay restorations: laboratory study. *J Esthet Restor Dent*. 2018;30(3):229–39.
2. El Zohairy AA, De Gee AJ, Mohsen MM, Feilzer AJ. Microtensile bond strength testing of luting cements to prefabricated CAD/CAM ceramic and composite blocks. *Dent Mater*. 2003;19(7):575–83.
3. de Kuijper M, Cune MS, Ozcan M, Gresnigt MMM. Clinical performance of direct composite resin versus indirect restorations on endodontically treated posterior teeth: a systematic review and meta-analysis. *J Prosthet Dent*. 2021. <https://doi.org/10.1016/j.prosdent.2021.11.009>.
4. Spitznagel FA, Boldt J, Gierthmuehlen PC. CAD/CAM ceramic restorative materials for natural teeth. *J Dent Res*. 2018;97(10):1082–91.
5. Chochlidakis KM, Pappaspyridakos P, Geminiani A, Chen CJ, Feng IJ, Ercoli C. Digital versus conventional impressions for fixed prosthodontics: a systematic review and meta-analysis. *J Prosthet Dent*. 2016;116(2):184–90 e12.
6. Gallardo YR, Bohner L, Tortamano P, Pigozzo MN, Lagana DC, Sesma N. Patient outcomes and procedure working time for digital versus conventional impressions: a systematic review. *J Prosthet Dent*. 2018;119(2):214–9.
7. Belli R, Wendler M, de Ligny D, Cicconi MR, Petschelt A, Peterlik H, Lohbauer U. Chairside CAD/CAM materials. Part 1: measurement of elastic constants and microstructural characterization. *Dent Mater*. 2017;33(1):84–98.
8. Zhang Y, Kelly JR. Dental ceramics for restoration and metal veneering. *Dent Clin North Am*. 2017;61(4):797–819.
9. Motevasselian F, Amiri Z, Chiniforush N, Mirzaei M, Thompson V. *In vitro* evaluation of the effect of different surface treatments of a hybrid ceramic on the microtensile bond strength to a luting resin cement. *J Lasers Med Sci*. 2019;10(4):297–303.
10. Rocca GT, Bonnafous F, Rizcalla N, Krejci I. A technique to improve the esthetic aspects of CAD/CAM composite resin restorations. *J Prosthet Dent*. 2010;104(4):273–5.
11. Reymus M, Roos M, Eichberger M, Edelhoff D, Hinkel R, Stawarczyk B. Bonding to new CAD/CAM resin composites: influence of air abrasion and conditioning agents as pretreatment strategy. *Clin Oral Investig*. 2019;23(2):529–38.
12. Ruse ND, Sadoun MJ. Resin-composite blocks for dental CAD/CAM applications. *J Dent Res*. 2014;93(12):1232–4.
13. Sadighpour L, Geramipناه F, Ghasri Z, Neshatian M. Microtensile bond strength of CAD/CAM-fabricated polymer-ceramics to different adhesive resin cements. *Restor Dent Endod*. 2018;43(4):e40.
14. Ferracane JL. Resin composite-state of the art. *Dent Mater*. 2011;27(1):29–38.
15. Dirxen C, Blunck U, Preissner S. Clinical performance of a new biomimetic double network material. *Open Dent J*. 2013;7:118–22.

16. Mainjot AK, Dupont NM, Oudkerk JC, Dewael TY, Sadoun MJ. From artisanal to CAD–CAM blocks: state of the art of indirect composites. *J Dent Res*. 2016;95(5):487–95.
17. Spitznagel FA, Horvath SD, Guess PC, Blatz MB. Resin bond to indirect composite and new ceramic/polymer materials: a review of the literature. *J Esthet Restor Dent*. 2014;26(6):382–93.
18. Yu H, Ozcan M, Yoshida K, Cheng H, Sawase T. Bonding to industrial indirect composite blocks: a systematic review and meta-analysis. *Dent Mater*. 2020;36(1):119–34.
19. Gunal-Abduljalil B, Ulusoy MM. The effect of resin cement shade and restorative material type and thickness on the final color of resin-matrix ceramics. *J Prosthodont Res*. 2022;66(1):75–82.
20. Komurcuoglu MB, Sagirkaya E, Tulga A. Influence of different surface treatments on bond strength of novel CAD/CAM restorative materials to resin cement. *J Adv Prosthodont*. 2017;9(6):439–46.
21. Coldea A, Swain MV, Thiel N. Mechanical properties of polymer-infiltrated-ceramic-network materials. *Dent Mater*. 2013;29(4):419–26.
22. Della Bona A, Corazza PH, Zhang Y. Characterization of a polymer-infiltrated ceramic-network material. *Dent Mater*. 2014;30(5):564–9.
23. Sağırkaya E, Atay A. Effects of different surface treatments on the bond strength of CAD/CAM resin nano ceramic or ceromer to resin cement. *Cumhuriyet Dent J*. 2019;22(2):226–34.
24. Bindl A, Mormann WH. Clinical and SEM evaluation of all-ceramic chair-side CAD/CAM-generated partial crowns. *Eur J Oral Sci*. 2003;111(2):163–9.
25. O'Connor C, Gavriil D. Predictable bonding of adhesive indirect restorations: factors for success. *Br Dent J*. 2021;231(5):287–93.
26. Souza EM, De Munck J, Pongprueksa P, Van Ende A, Van Meerbeek B. Correlative analysis of cement–dentin inter faces using an interfacial fracture toughness and micro-tensile bond strength approach. *Dent Mater*. 2016;32(12):1575–85.
27. Lopes GC, Baratieri LN, de Andrada MA, Vieira LC. Dental adhesion: present state of the art and future perspectives. *Quintessence Int*. 2002;33(3):213–24.
28. Hill EE. Dental cements for definitive luting: a review and practical clinical considerations. *Dent Clin North Am*. 2007;51(3):643–58.
29. Eldafrawy M, Ebroin MG, Gailly PA, Nguyen JF, Sadoun MJ, Mainjot AK. Bonding to CAD–CAM composites: an interfacial fracture toughness approach. *J Dent Res*. 2018;97(1):60–7.
30. Kassotakis EM, Stavridakis M, Bortolotto T, Ardu S, Krejci I. Evaluation of the effect of different surface treatments on luting CAD/CAM composite resin overlay workpieces. *J Adhes Dent*. 2015;17(6):521–8.
31. Nguyen JF, Migonney V, Ruse ND, Sadoun M. Resin composite blocks via high-pressure high-temperature polymerization. *Dent Mater*. 2012;28(5):529–34.
32. Soares CJ, Giannini M, Oliveira MT, Paulillo LA, Martins LR. Effect of surface treatments of laboratory-fabricated composites on the microtensile bond strength to a luting resin cement. *J Appl Oral Sci*. 2004;12(1):45–50.
33. Tosun B, Yanikoglu N. Evaluation of the effects of different surface modification methods on the bond strength of high-performance polymers and resin matrix ceramics. *Clin Oral Investig*. 2022;26(4):3781–90.
34. Fathy H, Hamama HH, El-Wassefy N, Mahmoud SH. Clinical performance of resin-matrix ceramic partial coverage restorations: a systematic review. *Clin Oral Investig*. 2022;26(5):3807–22.
35. Saridag S, Sevimay M, Pekkan G. Fracture resistance of teeth restored with all-ceramic inlays and onlays: an in vitro study. *Oper Dent*. 2013;38(6):626–34.
36. Elsaka SE. Bond strength of novel CAD/CAM restorative materials to self-adhesive resin cement: the effect of surface treatments. *J Adhes Dent*. 2014;16(6):531–40.
37. Pashley DH, Carvalho RM, Sano H, Nakajima M, Yoshiyama M, Shono Y, Fernandes CA, Tay F. The microtensile bond test: a review. *J Adhes Dent*. 1999;1(4):299–309.
38. Hooshmand T, van Noort R, Keshvad A. Bond durability of the resin-bonded and silane treated ceramic surface. *Dent Mater*. 2002;18(2):179–88.
39. Toledano M, Osorio R, Osorio E, Aguilera FS, Yamauti M, Pashley DH, Tay F. Durability of resin-dentin bonds: effects of direct/indirect exposure and storage media. *Dent Mater*. 2007;23(7):885–92.
40. Oyague RC, Monticelli F, Toledano M, Osorio E, Ferrari M, Osorio R. Effect of water aging on microtensile bond strength of dual-cured resin cements to pre-treated sintered zirconium-oxide ceramics. *Dent Mater*. 2009;25(3):392–9.
41. Pollington S, Fabianelli A, van Noort R. Microtensile bond strength of a resin cement to a novel fluorocanite glass-ceramic following different surface treatments. *Dent Mater*. 2010;26(9):864–72.
42. Higashi M, Matsumoto M, Kawaguchi A, Miura J, Minamoto T, Kabetani T, Takeshige F, Mine A, Yatani H. Bonding effectiveness of self-adhesive and conventional-type adhesive resin cements to CAD/CAM resin blocks. Part 1: effects of sandblasting and silanization. *Dent Mater J*. 2016;35(1):21–8.
43. D'Arcangelo C, Vanini L. Effect of three surface treatments on the adhesive properties of indirect composite restorations. *J Adhes Dent*. 2007;9(3):319–26.
44. Campos F, Almeida CS, Rippe MP, de Melo RM, Valandro LF, Bottino MA. Resin bonding to a hybrid ceramic: effects of surface treatments and aging. *Oper Dent*. 2016;41(2):171–8.
45. Lise DP, Van Ende A, De Munck J, Vieira L, Baratieri LN, Van Meerbeek B. Microtensile bond strength of composite cement to novel CAD/CAM materials as a function of surface treatment and aging. *Oper Dent*. 2017;42(1):73–81.
46. Barutçigil K, Barutçigil C, Kul E, Ozarslan MM, Buyukkaplan US. Effect of different surface treatments on bond strength of resin cement to a CAD/CAM restorative material. *J Prosthodont*. 2019;28(1):71–8.
47. Frankenbergera R, Hartmannb V, Krechc M, Krämerd N, Reiche S, Braunf A, Roggendorf M. Adhesive luting of new CAD/CAM materials. *Int J Comput Dent*. 2015;18(1):9–20.
48. Abdou A, Takagaki T, Alghamdi A, Tichy A, Nikaido T, Tagami J. Bonding performance of dispersed filler resin composite CAD/CAM blocks with different surface treatment protocols. *Dent Mater J*. 2021;40(1):209–19.
49. Chuenjit P, Suzuki M, Shinkai K. Effect of various surface treatments on the bond strength of resin luting agent and the surface roughness and surface energy of CAD/CAM materials. *Dent Mater J*. 2021;40(1):16–25.
50. Spitznagel FA, Boldt J. CAD/CAM ceramic restorative materials for natural teeth. *J Dent Res*. 2018;97:1082–91.
51. Rohr N, Flury A, Fischer J. Efficacy of a universal adhesive in the bond strength of composite cements to polymer-infiltrated ceramic. *J Adhes Dent*. 2017;19(5):417–24.
52. Blatz MB, Sadan A, Kern M. Resin-ceramic bonding: a review of the literature. *J Prosthet Dent*. 2003;89(3):268–74.
53. Yoshihara K, Nagaoka N, Sonoda A, Maruo Y, Makita Y, Okihara T, Irie M, Yoshida Y, Van Meerbeek B. Effectiveness and stability of silane coupling agent incorporated in 'universal' adhesives. *Dent Mater*. 2016;32(10):1218–25.
54. Peumans M, Valjakova EB, De Munck J, Mishevska CB, Van Meerbeek B. Bonding effectiveness of luting composites to different CAD/CAM materials. *J Adhes Dent*. 2016;18(4):289–302.
55. Goujat A, Abouelleil H, Colon P, Jeannin C, Pradelle N, Seux D, Grosgeat B. Mechanical properties and internal fit of 4 CAD–CAM block materials. *J Prosthet Dent*. 2018;119(3):384–9.
56. Cekic-Nagas I, Ergun G, Egilmez F, Vallittu PK, Lassila LV. Micro-shear bond strength of different resin cements to ceramic/glass-polymer CAD–CAM block materials. *J Prosthodont Res*. 2016;60(4):265–73.
57. Matinlinna JP, Lung CYK, Tsoi JKH. Silane adhesion mechanism in dental applications and surface treatments: a review. *Dent Mater*. 2018;34(1):13–28.
58. Agingu C, Zhang C, Jiang N, Cheng H, Ozcan M, Yu H. Intraoral repair of chipped or fractured veneered zirconia crowns and fixed dental prosthesis: clinical guidelines based on literature review. *J Adhes Sci Technol*. 2018;32(15):1711–23.

Publisher's Note

Springer Nature remains neutral with regard to jurisdictional claims in published maps and institutional affiliations.